



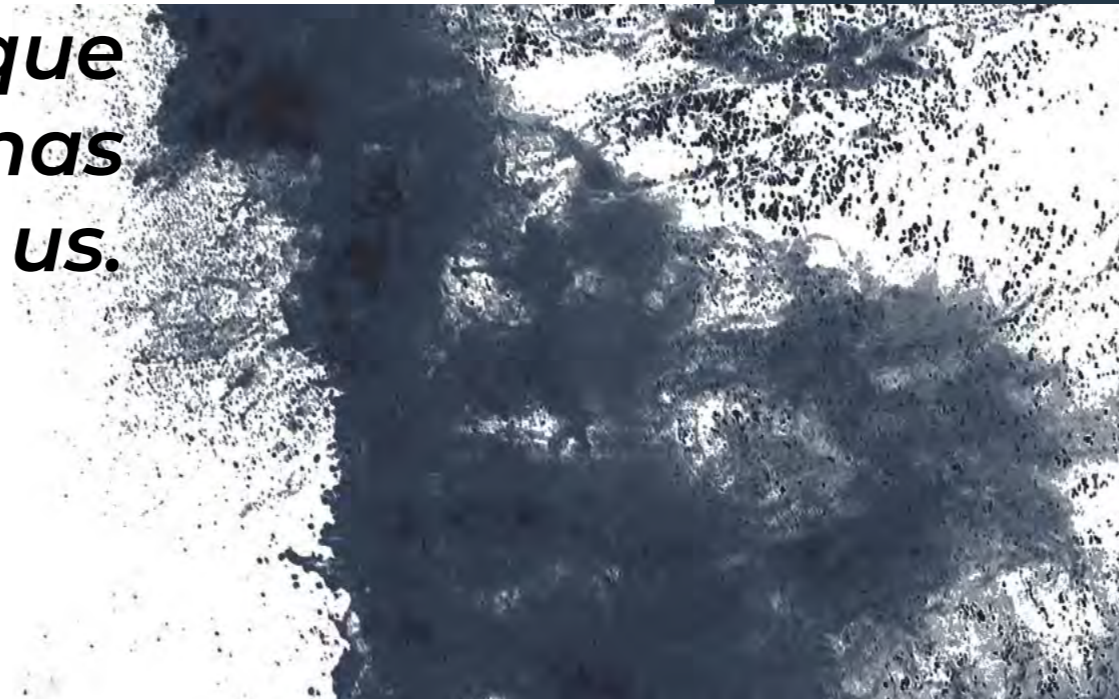
DRIVE THE SEA.

Collection

STRIDER



Each model comes from a thought, from a pencil that flows on a sheet and comes to life thanks to the passion for unique and brilliant design that has always distinguished us.



**SACS**

Design and architectural elements with a sharp attitude: this is the Sacs mix.

Under the aspiration of a visionary strategy, Sacs has traced the new trends in the sector by inaugurating the era of the maxiribs, which combine the comfort and safety of ribs, with the luxury and design of the yacht.

Sacs Owner is a daring enthusiast with a dynamic, smart, contemporary lifestyle.

He wants to own something special and unique that can be separated from the rest, from the masses, from the crowd. He is always looking for his own personal way of living the sea, dominating the waves and feel the taste of freedom.

Sacs, Drive the SEA.

Made in Italy
since 1989



Sacs excellence shapes your thoughts.
Each Sacs is a unique masterpiece, created following the wishes and needs of the Customers.

The most advanced technologies in the sector combined with the Italian craftsmanship strengthened by passion and thirty years of experience, make the most of each boat, ensuring excellent performance, in total safety.

Models



Rebel

55 

47 

40 

A new nautical concept to experience the sea: Rebel has re-written the rules.
BORN TO REBEL.

Strider

19 

15 

13 

Performance, design and comfort, combined with a surprising personality. However you want to experience the sea, there is the perfect rib for you.
NO LIMITS TO YOUR DREAM.

11 

10 

900 

800 

700 

Strider 19

Wildly spacious,
captivating, timeless

The owner can in fact select the layout and choose the décor as much as he likes adapting the boat to whatever use like a maxitender, a party boat or a luxury cruiser. His technical features allow unbeatable performances in all sea conditions.



1913 kW

Maximum installable
power

50kn

Maximum speed

22

Persons capacity

*The values refer to the tests performed in optimal weather conditions with the boats equipped with the inboard suggested engine.

Deck view: four forward-facing captain's seats and two opposite single seats with storage



Cockpit comfortable chill space

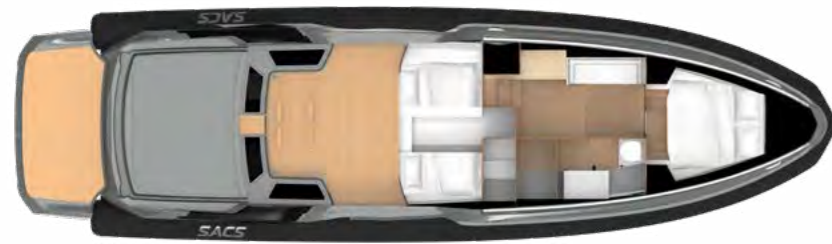


Stern guest stateroom with comfortable double bed



Fully equipped kitchen area

Lower deck



Main deck



Side



Lower deck



Main deck



Side



WALKAROUND



WALKAROUND



Technical specifications: Strider 19

	INBOARD
Overall length	18,13 m
EC certifying length	16,62 m
Max beam	5,36 m
Draft (to the prop)	1,10 m (1,10 m)
Tubes	80 cm
Number of tubes compartment	9
Hull type	Deep V Hull
Dead rise	22,3°
Dry weight with standard engines	21,0 t
Fuel tank capacity	2 x 1500 L
Water tank capacity	300 L
Waste tank capacity	280 L
Homologation category	CE - B
Persons capacity	22
Sleeping accommodation	4 + 1 Opt
Maximum installable power	1913 kW
Suggested engine	2 x MAN V8 1300 hp
Transmission	Surface Drives
Max speed	50 kn
Cruise speed	32 - 36 kn
Consumption (speed)	230 L/h (32 kn)
Range at cruising speed	415 NM
Design	Christian Grande DesignWorks
Project	SACS

Strider 15

Fast, innovative,
stylish

A strong character that takes shapes with style, energy, and power. All the sinuous lines of the boat converge on the big “beach area” at stern and at bow to create two precious and functional spaces.



992kW

Maximum installable
power

42kn

Maximum speed

16

Persons capacity

*The values refer to the tests performed in optimal weather conditions with the boats equipped with the inboard suggested engine.

Unequivocal Sacs eyes



Elegant dashboard with touchscreens and most innovative technologies



Stern guest stateroom with comfortable double bed



Bathroom area with separate rain shower and toilet



Lower deck

Main deck
INBOARDSide
INBOARDMain deck
OUTBOARDSide
OUTBOARD

Technical specifications: Strider 15

	INBOARD	OUTBOARD
Overall length	15,00 m	
EC certifying length	13,65 m	
Max beam	5,02 m	
Draft (to the prop)	0,80 m (1,10 m)	
Tubes	80 cm	
Number of tubes compartment	11	
Hull type	Deep V Hull	
Dead rise	20,9°	
Dry weight with standard engines	10,5 t	
Fuel tank capacity	1200 lt	2500 lt
Water tank capacity	225 lt	
Waste tank capacity	52 lt	
Homologation category	CE - B	
Persons capacity	16	
Sleeping accommodation	4	
Maximum installable power	650 kW	992 kW
Suggested engine	2 x Volvo D6 440 hp Diesel	2 x Mercury 600 hp
Transmission	Stern Drive	Outboard
Max speed	42 kn	51 kn
Cruise speed	28 - 32 kn	30 - 34 kn
Consumption (speed)	95 L/h (28 kn)	185 L/h (30 kn)
Range at cruising speed	350 NM	400 NM
Design	Christian Grande DesignWorks	
Project	SACS	

Strider 13

Unique, irresistible,
adventurer

Its unique console attracts glances with its imposing looks. It is ideal for a sporting owner seeking a high performance and spacious boat, but it is also perfect as a “chase boat” or a tender for a maxi yacht.



633kW

Maximum installable
power

45kn

Maximum speed

16

Persons capacity

*The values refer to the tests performed in optimal weather conditions with the boats equipped with the inboard suggested engine.

Deck view with enjoyable living area, adjustable table, food&beverage storages



Large sundeck and living area aft



Comfortable and stylish bow master stateroom with double bed



Bathroom area with rain shower and toilet

Side
INBOARDMain deck
INBOARD

Lower deck

Side
OUTBOARDMain deck
OUTBOARD

Technical specifications: Strider 13

	INBOARD	OUTBOARD
Overall length	13,38 m	13,43 m
EC certifying length		11,98 m
Max beam		3,98 m
Draft (to the prop)		0,70 m (1,00 m)
Tubes		70 cm
Number of tubes compartment		8
Hull type		Deep V Hull
Dead rise		23,2°
Dry weight with standard engines	6,6 t	5,9 t
Fuel tank capacity		1000 L
Water tank capacity		170 L
Waste tank capacity		40 L
Homologation category		CE - B
Persons capacity		16
Sleeping accommodation	2	2 + 2 Opt
Maximum installable power	633 kW	662 kW
Suggested engine	2 x Volvo D6 400 hp DPI	2 x Mercury 450 hp
Transmission	Stern Drive	Outboard
Max speed	45 kn	52 kn
Cruise speed	28 - 32 kn	30 - 34 kn
Consumption (speed)	68 L/H (28 kn)	100 L/H (30 kn)
Range at cruising speed	415 NM	300 NM
Design	Christian Grande DesignWorks	
Project	SACS	

Strider 11

Refined, relaxing,
thrilling



Main boat or tender use? A confident and captivating line, greater comfort than normal, the perfect mix of thrills, relax and fun.

544kW

Maximum installable
power

47kn

Maximum speed

14

Persons capacity

*The values refer to the tests performed in optimal weather conditions with the boats equipped with the inboard suggested engine.

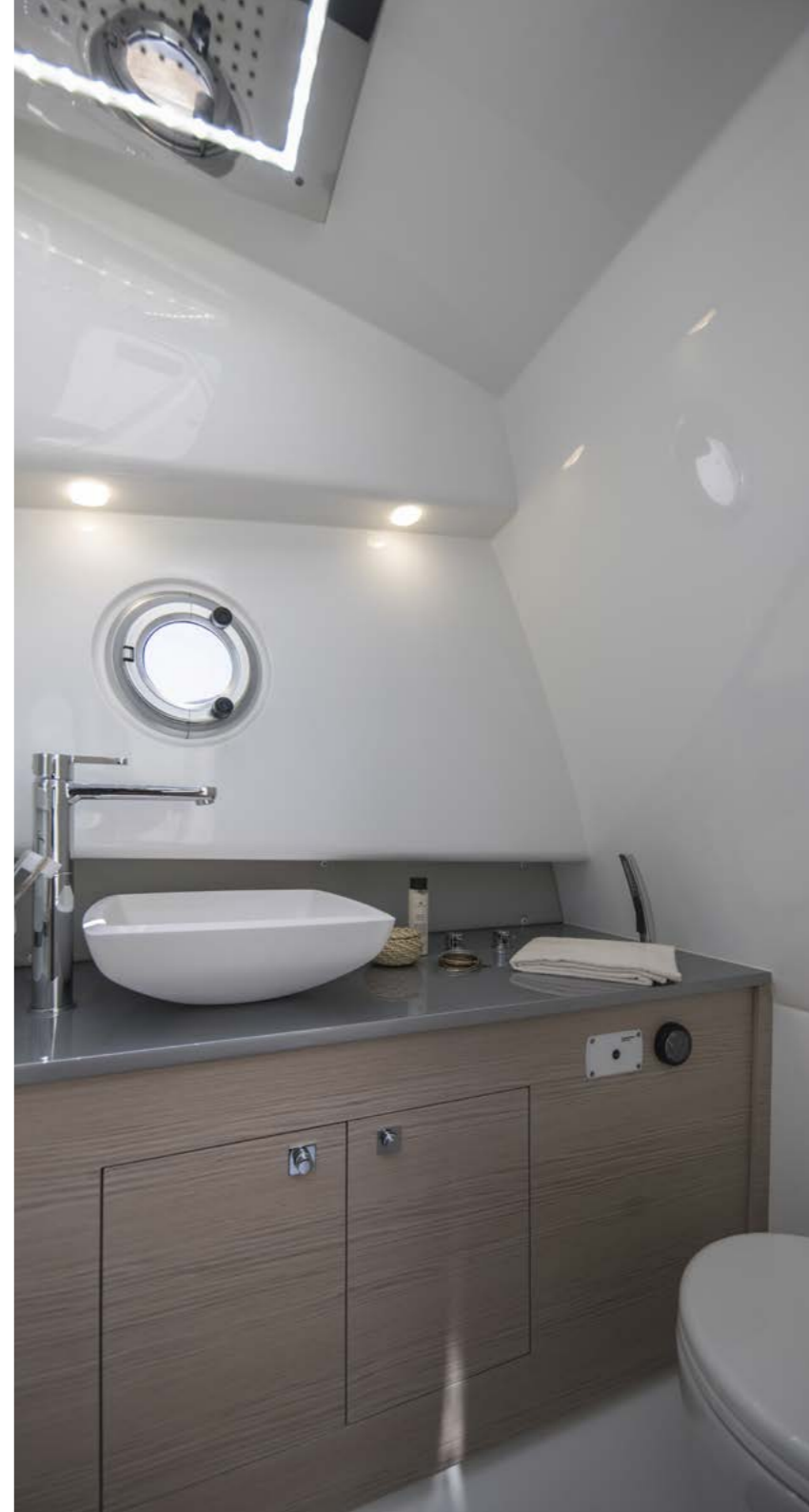
Deck view with enjoyable living area, adjustable table, food&beverage storages



Details: Sacs eyes are watching you



Comfortable and stylish bow master stateroom with double bed



Bathroom area with rain shower and toilet

Lower deck

Main deck
INBOARDSide
INBOARDMain deck
OUTBOARD OPENBACK

OUTBOARD OPENBACK

Main deck
OUTBOARD SUNDECK

OUTBOARD SUNDECK

Side
OUTBOARD

Technical specifications: Strider 11

	INBOARD	OUTBOARD SUNDECK	OUTBOARD OPENBACK
Overall length	11,02 m	11,51 m	
EC certifying length	9,98 m		
Max beam	3,79 m		
Draft (to the prop)	0,60 m (0,80m)	0,60 m (0,85 m)	
Tubes	70 cm		
Number of tubes compartment	6		
Hull type	Deep V Hull		
Dead rise	24,3°		
Dry weight with standard engines	4,5 t	4,5 t	4,2 t
Fuel tank capacity	530 L		
Water tank capacity	130 L		
Waste tank capacity	40 L		
Homologation category	CE-B		
Persons capacity	14		
Sleeping accommodation	2	2+2 opt	2
Maximum installable power	544 KW	662 KW	
Suggested engine	2X Volvo Diesel D4 – 320hp DPI	2X Mercury 300 hp	
Transmission	Stern Drive	Outboard	
Max speed	47 kn	48 kn	
Cruise speed	28 - 32 kn		
Consumption (speed)	70 L/h (28 kn)		
Range at cruising speed	220 NM		
Design	Christian Grande DesignWorks		
Project	SACS		

Strider 10

Roaring, sophisticated,
adaptive

Strider 10 perfectly expresses the elegant style of its owner. Comfortable spaces on deck, living area, all that is needed for prolonging the pleasure of a day cruise.



514kW
Maximum installable
power

54kn
Maximum speed

16
Persons capacity

*The values refer to the tests performed in optimal weather conditions with the boats equipped with the outboard suggested engine.

Bow sundeck



Cockpit table in teak, convertible into sundeck



Cabin under console with access from the front



Inox drawer fridge under the double driver seat

Side



Main deck



Lower deck



Technical specifications: Strider 10

	OUTBOARD
Overall length	9,92 m
EC certifying length	9,26 m
Max beam	3,44 m
Draft (to the prop)	0,55 m (0,85 m)
Tubes	68 cm
Number of tubes compartment	6
Hull type	Deep V Hull
Dead rise	22°
Dry weight with standard engines	3,0 t
Fuel tank capacity	450 L
Water tank capacity	80 L
Waste tank capacity	40 L (optional)
Homologation category	CE - B
Persons capacity	16
Sleeping accommodation	2
Maximum installable power	514 kW
Suggested engine	2 x Mercury 300 hp
Transmission	Outboard
Max speed	54 kn
Cruise speed	32 - 36 kn
Consumption (speed)	75 L/h (32 kn)
Range at cruising speed	200 NM
Design	Christian Grande DesignWorks
Project	SACS

Strider 900

Aggressive, versatile,
high performance

Thanks to its hydro-dynamic lines and its ample deck, the Strider 900 is perfect for dynamic and adventure use without compromising its sporting side which make it assertive in all situations at sea.



368kW

Maximum installable
power

44kn

Maximum speed

16

Persons capacity

*The values refer to the tests performed in optimal weather conditions with the boats equipped with the outboard suggested engine.

Enjoyable living area



Adjustable stern sunbed



Toilet under console



Elegant carbon style dashboard

Side



Main deck



Lower deck



Technical specifications: *Strider 900*

	OUTBOARD
Overall length	9,03 m
EC certifying length	8,48 m
Max beam	3,20 m
Draft (to the prop)	0,55 m (0,85 m)
Tubes	60 cm
Number of tubes compartment	6
Hull type	Deep V Hull
Dead rise	21°
Dry weight with standard engines	2,0 t
Fuel tank capacity	400 L
Water tank capacity	80 L
Waste tank capacity	40 L (optional)
Homologation category	CE - B
Persons capacity	16
Maximum installable power	368 kW
Suggested engine	2 x Mercury 200 hp
Transmission	Outboard
Max speed	44 kn
Cruise speed	28 - 32 kn
Consumption (speed)	55 L/h (28 kn)
Range at cruising speed	200 NM
Design	Christian Grande DesignWorks
Project	SACS

Strider 800

Dynamic,
uncompromising,
exciting

This model is fully part of the Strider range among the existing Strider 700 and Strider 900 models. Like the others, it presents the distinctive and unmistakable features of Sacs design: the console, the distribution of the spaces, the sporty shapes, clean and modern lines.



225kW

Maximum installable
power

48kn

Maximum speed

14

Persons capacity

*The values refer to the tests performed in optimal weather conditions with the boats equipped with the outboard suggested engine.

Bow spacious sundeck



Enjoyable living area with folding table



Toilet under console with access from the front



Bow sundeck extension

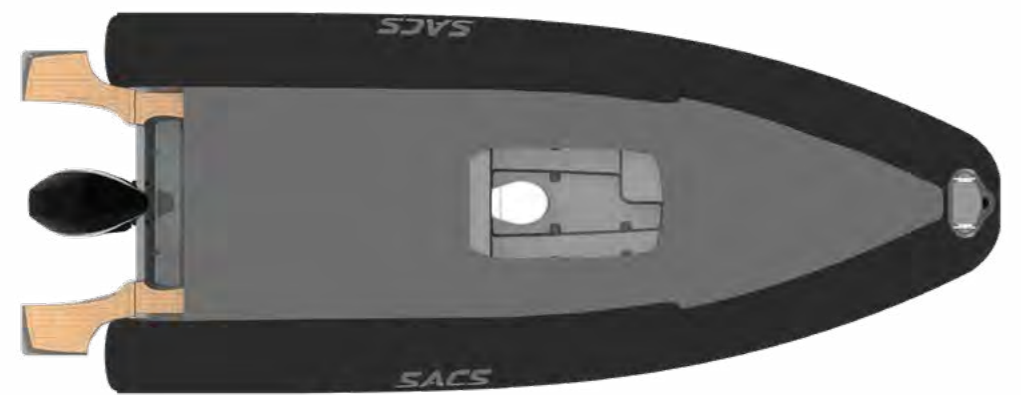
Side



Main deck



Lower deck



Technical specifications: Strider 800

	OUTBOARD
Overall length	8,09 m
EC certifying length	7,5 m
Max beam	3,10 m
Draft (to the prop)	0,55 m (0,85 m)
Tubes	60 cm
Number of tubes compartment	6
Hull type	Deep V Hull
Dead rise	23,1°
Dry weight with standard engines	1,8 t
Fuel tank capacity	320 L
Water tank capacity	80 L
Waste tank capacity	40 L (optional)
Homologation category	CE - B-C
Persons capacity	8-14
Maximum installable power	225 kW
Suggested engine	1 x Mercury 300 hp
Transmission	Outboard
Max speed	48 kn
Cruise speed	30 - 34 kn
Consumption (speed)	42 L/h (30 kn)
Range at cruising speed	230 NM
Design	Christian Grande DesignWorks
Project	SACS

Strider 700

Sporty, versatile,
immense fun

A RIB with sporty spirit and an elegant and modern livery. Its last generation dynamic lines, ensure exciting performance combined with a sophisticated optimization of the space.



186kW
Maximum installable
power

45kn
Maximum speed

16
Persons capacity

*The values refer to the tests performed in optimal weather conditions with the boats equipped with the outboard suggested engine.

Enjoyable living area with folding table



Details: teak walkway to the deck



Bow sundeck



Central console with windshield, stainless steel handrail and glove compartment

Side

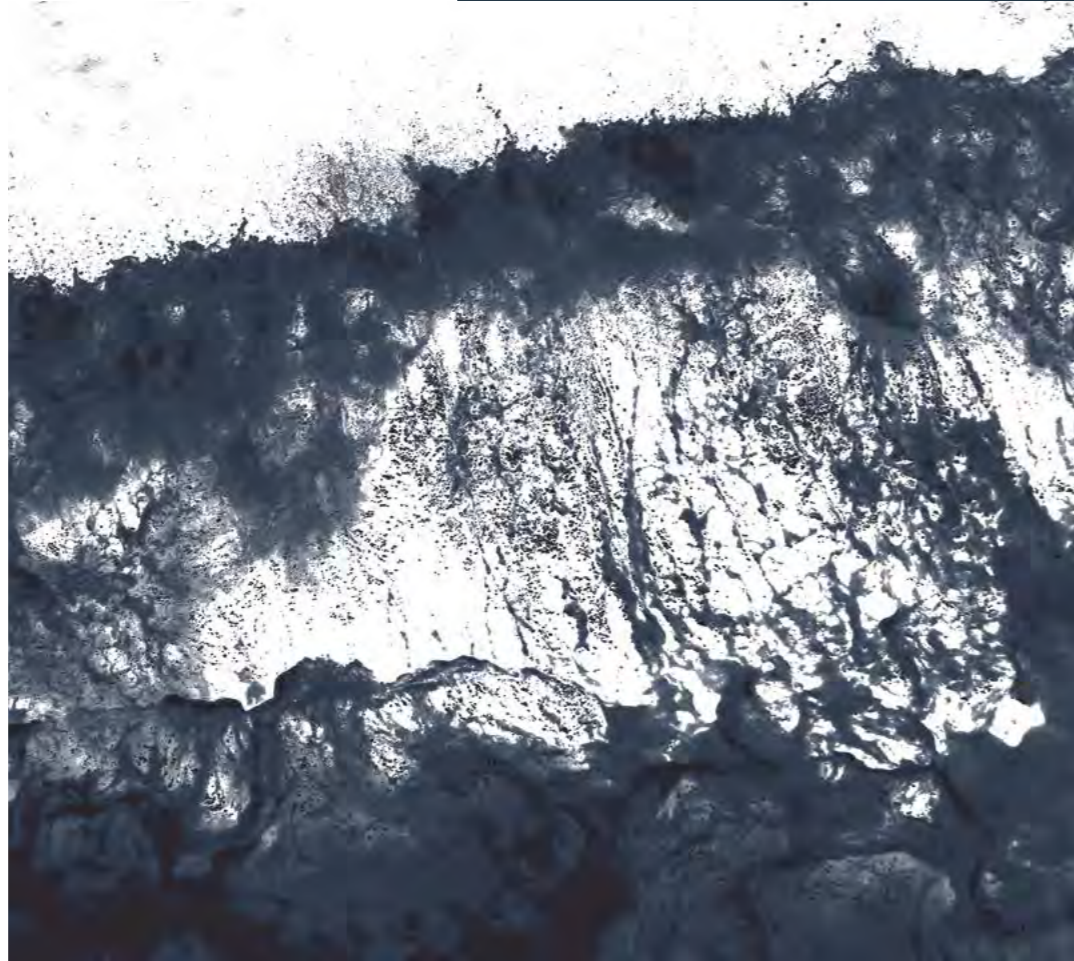


Main deck



Technical specifications: *Strider 700*

	OUTBOARD
Overall length	7,52 m
EC certifying length	6,90 m
Max beam	2,83 m
Draft (to the prop)	0,50 m (0,90 m)
Tubes	60 cm
Number of tubes compartment	6
Hull type	Deep V Hull
Dead rise	22,5°
Dry weight with standard engines	1,5 t
Fuel tank capacity	300 L
Water tank capacity	80 L (optional)
Waste tank capacity	
Homologation category	CE - C
Persons capacity	16
Maximum installable power	186 kW
Suggested engine	1 x Mercury 250 hp
Transmission	Outboard
Max speed	45 kn
Cruise speed	28 - 32 kn
Consumption (speed)	35 L/h (28 kn)
Range at cruising speed	240 NM
Design	Christian Grande DesignWorks
Project	SACS



The Characteristics of the boats are provided as example only. Furthermore, under any circumstances the above mentioned descriptions shall not represent an element to be used as assessment of conformity of the boats, including matters pursuant to the European directive EC 00/44.

As part of the strategy of constantly updating the technical and styling features of the boat, SACS reserves the right to amend the features of its boat at any time. The Customer must therefore carefully verify the features of the boat with SACS sales force before placing his order.




Via Don Locatelli, 49
20877 Roncello (MB)
Italia

Tel: +39 039 6885489
Email: info@sacsmarine.it
www.sacsmarine.com

 @SACS Sacsmarine

 @OfficialSacsMarine

 @sacsmarine_official