



X Class


PRINCESS
Distinction in Detail



Distinction in Detail





Your yacht is a part of your life. It's a home from home, a space to relax, a gateway to adventure, and a place to spend time with the people who matter most.

A Princess yacht makes the experience unforgettable. Combining breathtaking design, meticulous craftsmanship, cutting-edge technology and exceptional levels of personalisation, our craft set new standards in performance, comfort and style.

Wherever your voyage takes you, you'll remember every moment.



Distinction in Detail

At our shipyards in Plymouth, founded in 1965 on the edge of the English Channel, a highly skilled team of craftspeople come together to create something remarkable.

From designers to engineers, laminators to electricians, carpenters to metalworkers, each one possesses a mastery of their individual craft. And each one is completely focused on the details for which they are responsible.

Because by focusing on every detail, the end result is exactly how we want it to be. By taking pride in every detail, we can be proud of the finished yacht. And by perfecting every detail, we can create the perfect experience.





X Class

Rewriting the rules of yacht architecture, the X Class sets a new benchmark for luxury living spaces. A revolutionary 'Super Flybridge' covers almost the full length of the yacht to conjure up significantly more interior and exterior space. Each X Class model is designed for those extended stays onboard so you can keep on exploring new horizons.

This is the flybridge yacht experience, expanded.





X95 Vista



Characterised by beautifully sculpted surfaces, the X95 Vista enhances the already striking design language of the X Class. A new sculptured, single piece window, that stretches almost the entire length of her hull, accentuates her long flowing lines and complements the vast glazing of the main deck to reaffirm that she is a yacht designed around light and space. Her elegant profile is further refined by a new bow design language that visually lengthens her profile by opening up her forward structure and provides extensive views from the forward window of the main deck. Both her flybridge and main deck cover almost the full length of the yacht, delivering expansive spaces with flexibility that enables you to define each journey around your guests' preferences. With a fuel capacity of 13,818 litres, the X95 has the range for far-reaching, adventurous voyages.







Experience superyacht-space as you enter her main deck saloon and witness a line of sight through the forward window and, with the new open bow design, beyond to provide extensive views. Ascend the internal staircase to the upper deck and another unique experience awaits: a fully enclosed and climate-controlled sky lounge. Taking pride of place on her lower deck is the full beam master stateroom with en suite, complemented by her forward stateroom with walk-in wardrobe and en suite bathroom. Additional port and starboard guest cabins can each be configured with two single beds or an electrically-converting double bed, whilst generous crew quarters complete her extensive accommodation.



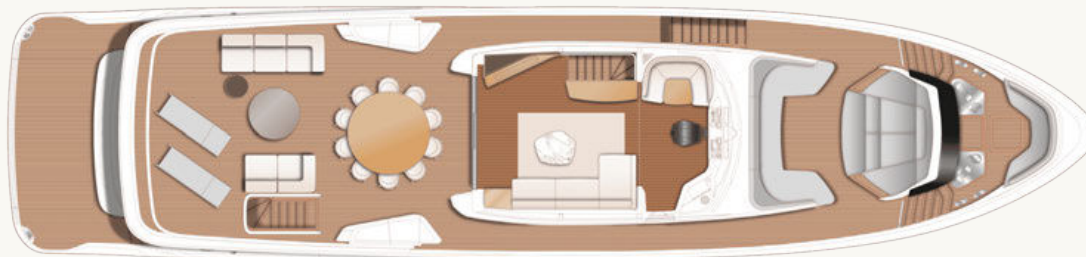






X95 Vista

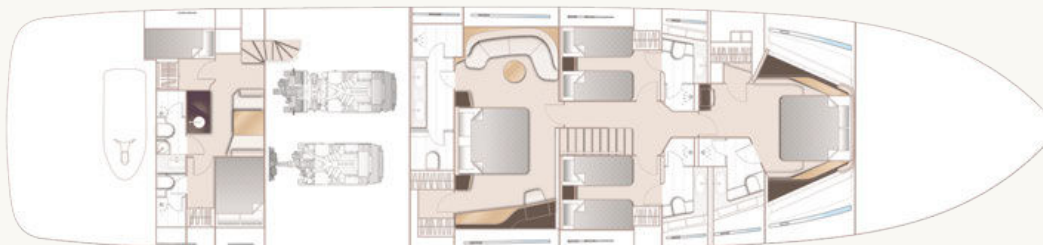
LAYOUTS AND SPECIFICATION



X95 Flybridge



X95 Main Deck



X95 Lower Deck

Principal Dimensions

Length overall (incl. pulpit)	95 ft 4 in / 29.0m
Length overall (excl. pulpit)	95 ft 4 in / 29.0m
Beam	22 ft 0 in / 6.70m
Draft	6 ft 8 in / 2.03m
Displacement approx.	106,624 kg / 235,065 lbs*
Fuel capacity	3,040 gal / 3,650 US gal / 13,818 l
Water capacity (excl. calorifier)	410 gal / 492 US gal / 1,865 l
Black water tank	160 gal / 192 US gal / 727 l

Engines - Diesel

Twin MAN V12-1900 (2 x 1,900mhp)	Maximum speed range - 19-21 knots [†]
Twin MAN V12-2000 (2 x 2,000mhp)	Maximum speed range - 20-22 knots [†]

Detailed specification

Deck fittings

- 6mm teak-laid transom platform, transom steps, cockpit deck, stairway to flybridge, side decks, steps to foredeck, flybridge aft sun deck and foredeck lounge walkthrough areas
- Reversible hydraulic anchor winches with bridge controls (Lewmar V8)
- Anchor pockets with anchor launch and retrieve
- Twin anchor system incorporating two 125kg galvanised kedge anchor with 100m of 14mm galvanised chain
- Deck chain stoppers (2)
- Mooring bollards forward (4)
- Mooring bollards aft (4)
- Mooring bollards on platform cheeks (2)
- Mooring bollards mid-ship (1 per side)
- Twin electric sternline mooring winches (Lewmar C6)
- Deck hatch access to chain, Bosuns and fender storage locker (non-locking, with access ladder)
- Freshwater deck/anchor wash (with both fore

and aft deck outlets) (under bow seat, starboard side outboard of transom steps) (quick release bayonet fitting)

- Stainless steel bow and stern fairleads
- Stainless-steel foredeck guard rails
- Stainless steel flybridge handrails
- Stainless gates (with glazing) to restrict access to the foredeck area
- PVC rubbing band with stainless-steel insert
- LED deck level lighting
- Full set of IMCO navigation lights
- Riding light
- Twin beam searchlight with remote controls (located on mast)
- Loudhailer (located on hardtop)
- Stern docking lights (on underside of canopy/flybridge overhang)
- Twin electric horns (located on mast)
- Fuel and water fillers (fuel: main deck, port and starboard, water: port side)

Cockpit and bathing platform

- Self-draining
- Upholstered U-shaped seating with storage below (non-locking)
- Teak dining table with removable central leaf section paired with 2 dining chairs
- LED overhead and deck level lighting
- Stainless-steel handrails (round top profile)
- Stern docking station controls portside including thruster controls and emergency engine stop, Rexroth control as standard
- Remote control 5.47m telescopic passarelle with folding handrails
- Watertight (double D sealed) hinged locking door giving access from transom into garage / optional beach club area
- Engine room to cockpit escape hatch
- Crew area escape hatch to cockpit
- Garage (to take wetbike up to 3.05m) with electro-hydraulic door with additional storage for optional SEABOBs (2 max, starboard bulkhead mounted rack)
- Rope storage locker (non-locking)

- Wash basin with mixer tap to portside
- Starboard locker containing remote fuel cocks, manual bilge pump with valve chest and manual controls for automatic fire extinguishers
- Integral stairway to flybridge with teak step treads
- Twin glazed transom gates leading to bathing platform
- Electro-hydraulic teak-laid transformer bathing platform (1,000kg SWL)
- Retractable bathing ladder (manual) in side of bathing platform
- Hot and cold transom shower
- Three phase shore support inlet (380v-415v / 42kVa @50Hz) with Glendinning cablemaster (15m/50ft) and a single phase shore power inlet (220-240v / 15kVa @ 50Hz. Both shore supports with isolation transformers. (US Spec single phase 2 x 100A)
- Seat and table covers
- Port side deck lockable access and stairway to crew accommodation

Helm

- Enclosed pilot house with central leather

upholstered electric seat with fore, aft and height adjustment

- U-shaped companion seating to port with table
- Sliding doors to fully enclose or open helm to skylounge area
- Instrument console with LED display incorporating engine instruments, CCTV linked to Bönning screens, fuel gauges, alarms and rudder position indicator
- Helm position instrument and controls console including:
 - power-assisted electro-hydraulic steering (SeaStar)
 - adjustable steering wheel
 - high-speed magnetic compass
 - electronic engine controls
 - bow thruster control
 - hydraulic anchor winch remote control
 - colour radar (with scanner) and GPS/chart plotter (twin 19" displays)
 - autopilot
 - speed and distance log
 - echo sounder with alarm
 - VHF with DSC R/T with intercom
 - remote control dual searchlight
 - horn button (to operate twin electric horns)

- audible and visual alarm for bilge pumps
- engine room fire extinguisher warning system
- Automatic fog horn with loudhailer
- Chart storage
- Drink holders
- Toughened glass screen (clear for night vision) with windscreen de-mist system
- Windscreen wipers with freshwater windscreen wash
- Exterior black mesh windscreen covers
- Bilge pump controls with visual pump running warnings
- 24v and 240v electrical control panel
- Riding light, helm and navigation light control switches
- USB charging points (2)
- Dimmable LED overhead, concealed (24v) and night lighting with scene selection
- Watertight pantograph door giving direct access from starboard side deck
- Electric drop window to port
- Timber flooring (V groove planked)

Skylounge

- L-shaped sofa, coffee table and pouf

- 55" 4K UHD LED TV on rise and fall
- DVD Blu-ray system with Naim Uniti Atom audio system speakers (2)
- Sideboard with fridge and storage
- Access stairway to main deck
- Stainless steel opening glass doors to aft deck area
- USB charging points (2)
- Dimmable LED overhead and concealed lighting (24v) with scene selection
- Tinted panoramic toughened side windows
- Glazed roof panels with powered blinds
- Electric blinds to all side windows
- Timber flooring (V groove planked) with rug inlay

Flybridge and foredeck

- Foredeck area with U-shaped seating, and storage locker
- Foredeck to incorporate glazed panels to allow light through to galley / dining area or optional main deck owner's stateroom below
- Sunbathing area with integrated adjustable teak headrests and storage, converts to aft facing u-shaped seating area.

- Flybridge aft deck area with free standing furniture
- Dining table with chairs to accommodate 8 persons (10 for optional 5 cabin layout)
- Naim Uniti Atom audio system with waterproof speakers (2) to flybridge
- Clear view hatch to aft cockpit
- Access stairway to aft cockpit
- Stainless-steel handrails with glass balustrade to aft and sides of flybridge deck
- Starboard storage/servery unit, incorporating liferaft stowage and deck wash outlet
- Port storage/servery unit with sink and tap, incorporating liferaft stowage
- LED overhead and deck level lighting
- Radar mast
- Twin matching whip aerials for VHF R/T and radio
- Covers to exterior furniture

Saloon

- Large curved sofa to port with storage below
- Curved sofa to starboard with storage below
- Coffee table with pouf
- 65" 4K UHD LED TV on rise and fall.

- Naim audio system with speakers (4) and subwoofer
- Servery unit with integrated drinks refrigerator, bottle storage and icemaker (located on port side forward of saloon)
- Occasional coffee table with four armchairs to starboard
- Full height glazing port and starboard in way of servery unit/bar and starboard free standing seating areas
- Panoramic tinted toughened glass windows port and starboard
- Triple stainless steel framed cockpit doors
- Watertight side hinge door to starboard side deck
- Access stairway to lower accommodation
- Access stairway to skylounge
- Dimmable LED overhead and concealed lighting with scene selection
- 220/240v outlets (4)
- USB charging points (2)
- Electric roller blinds to outboard windows
- Manual curtains on wave track to aft patio doors
- Fitted carpet

Galley

- Open layout / country kitchen with forward dining area
- Galley and island unit counter top in choice of granite or quartz
- Miele 5 zone induction hob
- 900mm wide conventional oven
- Miele Combination convection/microwave oven with grill
- Twin full height refrigeration units with deep freeze drawers
- Island unit/breakfast bar with triple stainless steel sinks, 12 place dishwasher, storage and space for optional drawer fridge
- Barstools (3)
- Chopping board
- Waste bin
- High and low level storage cupboards and drawers
- Extractor fan
- Space for optional wine cooler
- Access to deck saloon
- Watertight pantograph access door to port side deck (in forward saloon)
- 220/240v power outlets (4)
- Dimmable LED overhead and concealed lighting with scene selection

- Electric blinds to windows
- Timber flooring (V groove planked)

Dining area

- Dining table with aft facing fixed seating and dining chairs (5)
- Port sideboard bench unit with upholstered top
- Sideboard units (2) with crockery, glassware and general storage
- Entertainment unit with Naim Uniti Atom audio system and speakers (2)
- Ice maker
- Cutlery and crockery storage (in port side staircase unit)
- 220/240v power outlets (2)
- USB charging points (4)
- Dimmable LED overhead and concealed lighting (24v) with scene selection
- Panoramic tinted toughened glass windows port and starboard
- Powered blind to forward glazing
- Electric roller blinds to windows
- Timber flooring (V groove planked)

Day head

- Electric freshwater toilet
- Wash hand basin and counter top in thermoformed solid surface
- Storage cupboard
- Manual tension venetian blind
- Marble/granite/quartz floor

Accommodation

- All cabins and bathrooms feature opening portholes and air conditioning
- All cabins feature 220/240v powerpoints
- All en-suites feature 240v shaver points

Owner's stateroom

- Large double bed with bedside tables and drawers below
- Dressing area with full length mirror, hanging, shelf and drawer storage
- Built-in safe
- Starboard dressing table with integrated mirror, chair, storage drawers and cupboards
- Portside sofa with storage below and coffee table
- 55" 4K UHD LED TV

- Naim audio system with speakers (2) and subwoofer
- Panoramic windows including opening portholes
- Electric roman blinds to hull windows, with out-board manual sheer roller blind
- Dimmable LED overhead and concealed lighting (24v) with scene selection
- Wall lights (2)
- 220/240v outlets (4)
- USB connection points (4)
- Fitted carpet

En-suite bathroom

- Twin washbasins and counter top in thermoformed solid surface
- Mirror
- Storage lockers
- Separate compartment with toilet and option of combination toilet/bidet
- Shower compartment with automatic pump out
- Extractor fan
- Window with opening porthole
- Manual tension venetian blind
- LED overhead and concealed lighting (24v)
- Bathroom accessories

- Marble/granite/quartz to floor and specified bulkheads

Forward stateroom

- Large double bed with drawers below
- Walk-in wardrobe with shelves
- Dressing table with stool
- Mirror
- Storage lockers
- 43" UHD LED TV
- Naim Atom audio system with ceiling mounted speakers (2)
- Windows with opening portholes
- Electric roman blinds to hull windows
- LED overhead and concealed lighting (24v) with scene selection
- Wall lights (2)
- 220/240v outlets (2)
- USB charging points (4)
- Fitted carpet

En-suite bathroom

- Washbasin and counter top in thermoformed solid surface

- Mirror
- Storage lockers
- Shower compartment with automatic pump out
- Extractor fan
- Window with opening porthole
- Manual tension venetian blind
- LED overhead and concealed lighting (24v)
- Bathroom accessories
- Marble/granite/quartz flooring

Starboard guest cabin

- Two single beds with drawers below (with option of double bed conversion)
- Bedside table
- Wardrobe with lower shelves
- Mirror
- Storage lockers
- Window with opening portholes
- Electric roman blinds to hull windows
- Dimmable LED overhead and concealed lighting (24v) with scene selection
- Individual berth lights
- 220/240v outlets (1)
- USB charging point (2)
- Fitted carpet

En-suite bathroom

- Washbasin and counter top in thermoformed solid surface
- Mirror
- Storage lockers
- Shower compartment with automatic pump out
- Extractor fan
- Windows with opening porthole
- Manual tension venetian blind
- LED overhead and concealed lighting (24v)
- Bathroom accessories
- Marble/granite/quartz flooring

Port guest cabin

- Two single beds with drawers below (with option of double bed conversion)
- Bedside table
- Wardrobe with shelves
- Mirror
- Storage lockers
- Window with opening portholes
- Electric roman blinds to hull windows
- Dimmable LED overhead and concealed lighting (24v) with scene selection

- Individual berth lights
- 220/240v outlets (1)
- USB charging point (2)
- Fitted carpet

En-suite bathroom

- Washbasin and counter top in thermoformed solid surface
- Mirror
- Storage lockers
- Shower compartment with automatic pump out
- Extractor fan
- Windows with opening porthole
- Manual tension venetian blind
- LED overhead and concealed lighting (24v)
- Bathroom accessories
- Marble/granite/quartz flooring

Lower accommodation lobby / passageway area

- Linen cupboard below companionway stairs
- Space for optional washer/dryer below companionway stairs
- Dimmable LED overhead and concealed lighting (24v) with scene selection

- Fitted carpet

Crew quarters

- Standard transom configuration is a transom garage with Captain's double cabin with en-suite, crew bunk cabin, aft bathroom, crew mess and dining area.
- Optional transom configuration is a beach club with Captain's double cabin - with en-suite, crew bunk cabin, central bathroom and aft beach club/ dining area.
- (N.B. All lower crew furniture is in white finish, with solid surface Carrera white (gloss finish) bathroom vanity unit tops and solid surface Koko white (satin finish) bathroom floors and non-slip flooring)

Captain's cabin

- Double berth with storage below
- Wardrobe with shelf
- Mirror
- Storage drawers under bunk
- Opening porthole and venetian blind
- Emergency deck hatch access to cockpit

- LED overhead lighting (24v)
- Individual berth light
- 220/240v outlets (1)
- USB charging points (2)
- Fitted carpet

En-suite bathroom:

- Washbasin with Carrera White (gloss finish) solid surface counter top
- Mirror
- Storage lockers
- Shower compartment with automatic pump out
- Extractor fan
- Porthole with venetian blind
- LED overhead lighting (24v)
- Bathroom accessories
- Solid surface flooring in Koko white (satin finish)

Port crew cabin

- Single bunk beds (2)
- Wardrobe with shelf
- Mirror
- Storage lockers
- Opening porthole and venetian blind

- LED overhead lighting (24v)
- Individual berth lights
- 220/240v outlets (2)
- USB charging points (2)
- Fitted carpet

Crew bathroom

- Washbasin with Carrera white (gloss finish) solid surface counter top
- Mirror
- Storage lockers
- Shower compartment with automatic pump out
- Extractor fan
- Porthole with venetian blind
- LED overhead lighting (24v)
- Bathroom accessories
- Solid Surface flooring in Koko white (satin finish)

Crew area

- Access from port side deck (also transom door with optional beach club)
- Access to engine room
- Storage space, cupboards and lockers
- Dining area with table

- Crew mess with microwave with grill, sink, refrigerator and waste bin
- Solid surface counter top in Ice Crystal (satin finish)
- Washing machine and separate tumble dryer
- LED overhead lighting (24v)
- Non-slip flooring

Power and drive systems

- Engine room soundproofed
- High volume air intakes
- Engine room extractor fan with electronic time delay
- Engine exhaust silencers and water-cooled exhausts
- Engine beds integrally moulded with hull for strength and vibration absorption
- Forward and aft engine room bulkheads integrally bonded including acoustafoam layers
- Engines flexibly mounted
- Automatic fire extinguisher with remote override control
- Automatic and manual bilge pumps
- Propeller shafts in Marinemet
- 5-bladed propellers in nickel aluminium bronze

- High speed balanced rudders
- Cathodic protection for sterngear
- Sterngear, engines, fuel tank fillers, all electrically bonded
- LED engine room lighting
- Engine room access from port side deck via crew area and from cockpit deck
- Power-assisted electro-hydraulic steering system
- Electronic engine and gear shift controls
- Bow thruster with dual-station controls (550kgF)
- Fresh water supply point in engine room
- Dripless self-aligning shaft seals

Electrical systems

24 Volt:

- 4 x heavy duty batteries for engine starting
- 6 x heavy duty auxiliary batteries
- Battery link facility with remote control at helm position
- Both battery banks are charged using a voltage sensitive relay that parallels both battery banks when a charging source is present
- 1 x 100 amp charger, 1x 100 amp-3500W

charger/inverter & 1x 25 amp charger (for generator battery).

- Remote battery isolator control switches at main switch panel position
- Circuit breakers on all circuits
- 24v to 12v converters for certain navigation and radio circuits
- Galvanic isolation system
- CCTV system with camera in aft cockpit and two fixed cameras in engine room linked to Böning system
- Princess Connect telemetry and maintenance

220/240 Volt:

- European specification: 2 x 40kW @ 50Hz Onan diesel generators in own sound shields, water cooled and with specially silenced exhaust systems and with remote operation from main control panel
- USA specification: 2 x 40kW @ 60Hz Onan diesel generators in own sound shields, water cooled and with specially silenced exhaust systems and with remote operation from main control panel
- Three phase shore inlet (380v-415v / 42kVA

- @50Hz) with Glendinning cablemaster (15m/ 50ft) and a single phase shore power inlet (220-240v / 15kVA @ 50Hz. Both shore supports with isolation transformers. (US Spec single phase 2 x 100 amp)
- Shore power/generator change over control operated from main control panel
- Polarity check system
- Earth leakage safety trip, circuit breakers on all circuits
- Power points (240v) in all cabins and living areas, helm position and galley
- 240v shaver points in washrooms
- 3kW immersion heater for fresh water (2)

Fuel system

- Main fuel tank with fuel polishing transfer system to day tank giving a total 13,818 l of fuel capacity (forward fuel bunker tank 4,866l and main fuel bunker tank 8,008l plus day fuel tank 944l)
- Fuel fillers to port and starboard
- High capacity duplex fuel filters/water traps with integral changeover valves and water sensors connected to alarms at helm position
- Remote fuel isolation controls in cockpit locker

for main engines and generators

- Fuel gauges at helm position

Air conditioning system

- Air conditioning/heating reverse cycle 336,000 BTU fan capacity with 288,000 BTU chiller capacity suitable for temperatures to 40°C (tropical)
- Windscreen demist facility
- Outlets in all areas

Water system

- Water tanks giving 1,865l capacity plus 205l hot water calorifier
- Automatic water pump with filter
- Water level gauge
- Deck filler
- Pump circuit breaker at main switch panel
- Electric freshwater toilet system linked to 720l holding tank, content gauge and low noise electric overboard discharge, with macerator backup system as well as dockside discharge system
- Grey water to take waste water from interior

sinks/showers, washing machine(s) and dishwasher. Galley sink to have Y valve fitted to allow waste overboard or to grey water tank. Exterior sinks will drain overboard.

Bilge pump

- Automatic/manual override electric bilge pumps in engine room, rudder area, forward accommodation, crew area and anchor chain locker (10 in total)
- High capacity manual bilge system with suction points in the same areas
- Electric bilge pumps have controls and warning lights with audible alarm at helm position

Fire extinguisher

- Automatic engine room fire extinguisher system (with manual override) and warning system at helm position providing automatic shutdown of engines, generators and ventilation fans
- Manually operated engine room air shutoff system
- Hand operated fire extinguishers in all guest cabins, galley, crew quarters and flybridge

Other standard equipment

- Ensign staff
- Fenders (8)
- Mooring warps (4)
- First aid kit
- Set of towels (8 large, 8 hand) (10 sets for optional 5 cabin layout)
- Quilted bed covers supplied to all cabins (except crew cabin)
- Complete set of Lucrezia crystal glassware (8 settings consisting of tumbler, highball and wine glasses) (10 settings for optional 5 cabin layout)
- Set of Sous Le Soleil crockery (8 settings consisting of plate, cake plate, dessert plate, bowl, cup and saucer) (10 settings for optional 5 cabin layout)
- Set of stainless steel cutlery (8 settings of David Mellor "Paris" cutlery 7 pieces) (10 settings for optional 5 cabin layout)
- Tool kit
- Boat hook
- Owner's manual and engine manual
- Ship's document case
- Dynamat applied in the following locations
- Crews aft engine room bulkhead

- Crew deck head
- Forward main deck owner's stateroom/dining area deck head

Finishes

- Teak-laid decks to all external deck areas (including flybridge)
- Timber flooring (V groove planked) to galley, skylounge, wheelhouse and forward dining area (wheelhouse in Newport oak as standard)
- Furniture in Rovere oak with satin finish as standard. Optional finishes include ash or silver oak with a satin finish or walnut wood in a satin or gloss finish
- Marble, quartz or granite floors in all bathroom suites in guest accommodation (including day head)
- Thermo-formed solid surface wash hand basin counter-tops in all bathroom suites and day head
- Galley counter top in granite or quartz as standard (some options carry additional premiums)
- Choice of high quality carpets and fabrics from extensive range
- Curtains, blinds or sunscreens to all windows and

portholes (excludes pantograph doors and wheelhouse)

- Crew cabins have fitted carpet
- Crew bathrooms have solid surface floors and countertops
- Non-slip safety flooring to crew mess and passageway



X90



The X90 is the newest addition to our X Class range, perfect for entertaining in style, with three distinct external zones for socialising as well as a unique new main deck design.





The aft dining area is surrounded by curved patio doors which offer panoramic views from inside the yacht. Four spacious double guest cabins complement the other luxurious features of the X90 including a full beam main deck master.

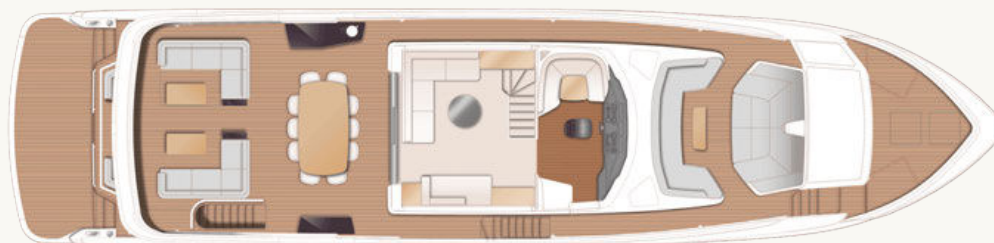






X90

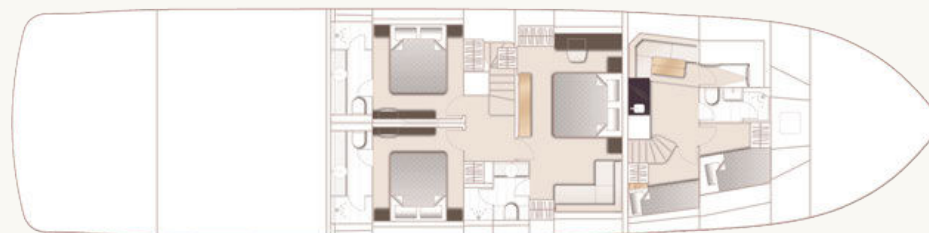
LAYOUTS AND SPECIFICATION



X90 Flybridge



X90 Main Deck



X90 Lower Deck

Principal Dimensions

Length overall (incl. pulpit)	87 ft 10 in / 26.77m
Length overall (excl. pulpit)	87 ft 10 in / 26.77m
Beam	21 ft 8 in / 6.62m
Draft	5 ft 10 in / 1.79m
Displacement approx.	91,442 kg / 201,595 lbs*
Fuel capacity	2,419 gal / 2,905 US gal / 11,000 l
Water capacity (excl. calorifier)	330 gal / 396 US gal / 1,500 l
Black water tank	132 gal / 158 US gal / 600 l

Engines - Diesel

Twin MAN V12-1900 (2 x 1,900mhp)	Maximum speed range - 23-25 knots [†]
Twin MAN V12-2000 (2 x 2,000mhp)	Maximum speed range - 24-26 knots [†]



X80



The beautifully sculpted surfaces and long flowing design lines of the X95 are carried through into her sister ship, the X80. The X80 becomes the second member of the X Class 'Superfly' family with a 'super flybridge' providing in excess of 30% more useful interior space onboard than a traditional flybridge yacht of its length. Available with an optional main deck master stateroom which includes a private owner's sundeck, the X80's capabilities for adventure provides the opportunity to explore cruising grounds further afield with the option of a long range 8,800 litre tank.





The X80 brings the outside in through the maximisation of glazing which flows along the entire length of the main deck encasing the saloon, galley and forward dining area. The use of light and innovative design continues below decks where 8 guests are accommodated across 4 en suite cabins, a full beam master stateroom located amidships, a forward guest stateroom, a double guest to starboard and a twin cabin to port. Located aft of the main accommodation is the crew quarters which can accommodate 3 crew with the standard layout. Life on-board the X80 really is unlike that of any other boat of its size.





Experience the X80



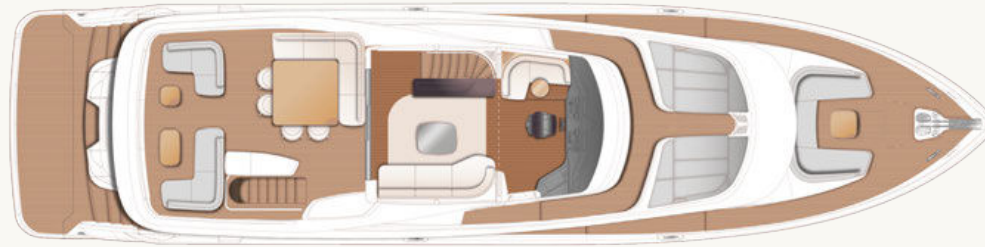
Take a virtual tour of the X80





X80

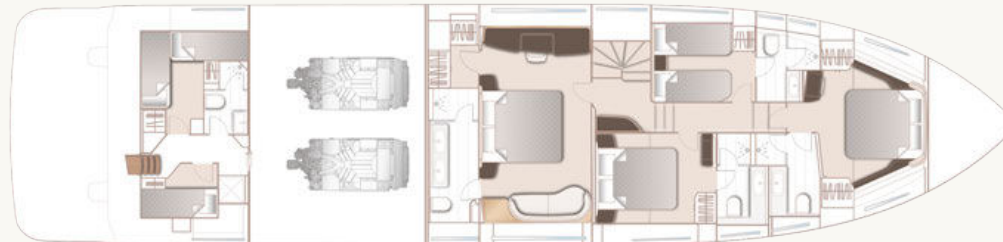
Layouts and Specification



X80 Flybridge



X80 Main Deck



X80 Lower Deck

Principal Dimensions

Length overall (incl. pulpit)	82 ft 5 in / 25.11m
Length overall (excl. pulpit)	82 ft 5 in / 25.11m
Beam	19 ft 11 in / 6.07m
Draft	6 ft 0 in / 1.83m
Displacement approx.	70,314 kg / 155,016 lbs*
Fuel capacity	1,540 gal / 1,849 US gal / 7,000 l
Water capacity (excl. calorifier)	326 gal / 391 US gal / 1,480 l
Black water tank	119 gal / 143 US gal / 540 l

Engines - Diesel

Twin MAN V12-1650 (2 x 1,650mhp)	Maximum speed range – 25-27 knots†
----------------------------------	------------------------------------

Detailed Specification

Deck fittings

- Teak-laid transom platform, transom steps, cockpit deck, stairway to flybridge, side decks, steps to foredeck, flybridge aft sun deck and foredeck seating walkthrough areas
- Reversible hydraulic anchor winches with foredeck and main helm controls
- Stemhead roller with manual anchor launch and retrieve
- Twin anchor system incorporating a primary anchor - 80kg galvanised Lewmar claw anchor with 100m of 14mm galvanised chain and a secondary anchor - 50kg galvanised Lewmar claw anchor with 70m of 14mm galvanised chain
- Twin electric stern line mooring winches
- Deck hatch access to chain locker, rope locker and engine room
- Freshwater deck/anchor wash (with both fore and aft deck outlets)
- Stainless steel bow and stern fairleads
- Stainless steel bow spring cleats (1 pair, port and starboard)

- Stainless steel stern spring cleats (1 pair, port and starboard)
- Stainless steel guard rails to foredecks
- Stainless steel flybridge handrails with glazed panel
- Stainless steel handrails to main deck side decks
- Foredeck escape hatch
- Foredeck U-shaped seating area with removable coffee table
- Drinks holders (12)
- Twin coach roof lockers for storage of fenders, ropes and cushions
- PVC rubbing band with stainless steel insert
- LED deck level lighting
- Full set of IMCO navigation lights
- Riding light
- Twin beam searchlight with remote controls
- Stern docking lights
- Twin electric horns
- Fuel and water fillers

Cockpit and bathing platform

- Self-draining
- Upholstered U-shaped seating with storage below (for life-rafts)
- Teak folding dining table
- LED overhead and deck level lighting
- Stainless-steel handrails
- Stern docking (second) station controls portside including engine controls, thruster controls, windlass controls and emergency engine stop
- Remote control 4.5m telescopic passerelle with automatic folding handrails (1.2m overhang)
- Watertight pantograph door giving access from bathing platform into crew area/engine room
- Engine room to cockpit escape hatch
- Stern lazarette and central transom locker with provision storage and charging for optional SEABOBs (2 max.) to accommodate F5/F5S/F5SR models.
- Wash basin with mixer tap to portside
- Starboard locker containing remote fuel cocks, manual bilge pump with valve chest and manual controls for automatic fire extinguishers
- Integral stairway to flybridge with teak step

treads

- Twin transom gates leading to bathing platform
- Electro-hydraulic teak-laid raise/lower bathing platform (550kg SWL)
- Retractable bathing ladder (manual) in side of bathing platform
- Hot and cold transom shower
- 220/240v shore support inlet
- Canvas cockpit cover and table cover

Helm

- Enclosed pilot house (via sliding doors) with central leather upholstered seat with fore, aft adjustment
- L-shaped companion seating to port (with deployable side table) and optional navigator seat to starboard
- 2-stage sliding doors to fully enclose or open helm to sky lounge area
- Instrument console with LCD display incorporating engine instruments, optional CCTV linked to Böning screen, fuel gauges, alarms and rudder position indicator
- Helm position instrument and controls console including:

- power-assisted electro-hydraulic steering (SeaStar)
- adjustable steering wheel
- high-speed magnetic compass
- electronic engine controls
- bow thruster control
- anchor winch remote control
- colour radar (with scanner) and GPS/chart plotter (twin 15.6" displays)
- Single 15" Böning display
- autopilot
- speed and distance log
- echo sounder with alarm
- VHF with DSC R/T with intercom
- remote control dual searchlight
- horn button (to operate twin electric horns)
- audible and visual alarm for bilge pumps
- engine room fire extinguisher warning system
- Automatic fog horn with loudhailer
- Chart storage
- Drink holders
- Toughened glass screen (clear for night vision) with windscreen de-mist system
- Windscreen wipers with freshwater windscreen wash
- Exterior black mesh windscreen covers

- Bilge pump controls with visual pump running warnings
- 24v and 240v electrical control panel
- Riding light, helm and navigation light control switches
- Dimmable LED overhead/concealed lighting (24v) and night lighting with scene selection
- Watertight pantograph door giving direct access to starboard side foredeck walkthrough area
- Timber flooring (V groove planked)
- 220/240v outlets (1)
- USB charging points (2)

Skylounge

- Sofa and coffee table
- Naim Uniti Atom audio system with Focal 100 ICW6 speakers (2)
- Sideboard with fridge and storage
- Access stairway to main deck
- Stainless steel opening glass patio doors to aft deck area
- USB connection points (2)
- Dimmable LED overhead/concealed lighting (24v) with scene selection
- Tinted panoramic toughened side windows

- Glazed roof panels with powered blinds
- Manual roller blinds to all side windows
- Manual curtains to aft door, stowed to port
- Timber flooring (V groove planked) with rug inlay
- 220/240v outlets (1)
- USB charging points (2)

Flybridge and flybridge foredeck

- Flybridge foredeck with twin sunpads
- Flybridge aft deck area with twin L-shaped sofas and coffee tables (2). Port side sofa can be adjusted to face forward or aft.
- Dining table with chairs to accommodate 8 persons (10 for optional 5 cabin layout)
- Naim Uniti Atom audio system with waterproof JL Audio M6-650X-L speakers (2) to aft end of flybridge
- Clear view hatch to aft cockpit
- Access stairway to aft cockpit
- Stainless-steel handrails with glass balustrade to aft of flybridge deck
- Storage lockers port/starboard
- Aft wet bar unit with electric barbecue, sink and tap, waste bin and storage with solid surface

counter top.

- LED overhead and deck level lighting
- Radar mast
- Twin matching whip aerials for VHF R/T and radio
- Covers to exterior furniture, (cockpit cover, cockpit table cover, flybridge table cover (includes zip in chair covers), flybridge wetbar cover (2), flybridge L-shaped sofa covers (2), flybridge coffee table covers (2), flybridge dining area sofa, flybridge forward sunpad covers (2), foredeck seating cover and foredeck coffee table cover)

Saloon

- Large L-shaped sofa to port with storage below
- Sofa to starboard with storage below
- Coffee table
- 55" 4K UHD LED TV on rise and fall.
- Naim Uniti Atom audio system with Focal 100 ICW6 speakers (2) and Focal Cub Evo subwoofer
- Servery unit with integrated drinks refrigerator
- Glasses storage sideboard
- Panoramic tinted toughened glass windows port

and starboard

- Triple stainless-steel framed cockpit doors
- Access stairway to lower accommodation
- Access stairway to skylounge
- Dimmable LED overhead/concealed lighting (24v) with scene selection
- 220/240v outlets (2)
- USB charging points (4)
- Manual roller blinds to all outboard windows
- Manual curtains on wave track to aft patio doors, stowed to port
- Fitted carpet
- Onboard ethernet router and 4G/5G internet modem

Galley

- Granite/quartz counter top
- Open bar/servery layout with powered electric screen to fully enclose galley and sliding door
- Miele 4-zone induction hob
- Hob extractor
- Miele combination microwave/convection oven with grill
- 1.5-bowl stainless-steel sink with mixer tap
- Chopping board and storage

- Full height refrigerator/deep freezer
- Dishwasher
- Icemaker
- Waste bin
- Drawers and storage cupboards
- Manual roller blinds to window
- Pantograph door to starboard side deck
- Dimmable LED overhead and task lighting (24v)
- 220/240v outlets (4)
- Timber flooring (V groove planked)
- Access to deck saloon via sliding door
- Access to dining area via sliding door

Dining area

- Dining table with aft facing fixed seating and dining chairs (4)
- Upholstered leather sideboard unit with crockery, glassware and general storage
- Entertainment unit with Naim Uniti Atom audio system and Focal 100 ICW6 speakers (2)
- 220/240v power outlets (2)
- USB charging points (2)
- Dimmable LED overhead/concealed lighting (24v) with scene selection
- Full-height panoramic tinted toughened glass

port window

- Opening porthole (2) (3 with optional main deck Owner's stateroom)
- Manual roller blinds to outboard and forward windows
- Fitted carpet

Day head

- Electric freshwater toilet
- Wash basin and counter top in thermoformed solid surface
- Storage cupboard
- Manual tension venetian blind
- Solid surface flooring

Accommodation

- All cabins and bathrooms feature opening portholes and air conditioning
- All cabins feature 220/240v power points
- All en-suites feature 240v shaver points

Owner's stateroom

- Large double bed with bedside tables and

drawers below

- Dressing area with full length mirror, hanging, shelf and drawer storage
- Built-in safe
- Port side dressing table with integrated mirror, chair, storage drawers and cupboards
- Starboard side sofa with storage drawers to forward bulkhead
- 55" 4K UHD LED TV
- Naim Uniti Atom audio system with Focal 100 ICW6 speakers (2) and Focal Cub Evo subwoofer
- Panoramic windows including opening portholes
- Roman blinds to hull windows
- Dimmable LED overhead/concealed lighting (24v) with scene selection
- 220/240v outlets (2)
- USB charging points (4)
- Fitted carpet

En-suite bathroom

- Twin washbasins and vanity top in thermoformed solid surface
- Mirror
- Storage lockers

- Electric freshwater toilet and option of separate bidet
- Shower compartment with automatic pump out
- Extractor fan
- Heated towel rail
- Window with opening porthole
- Manual tension venetian blind
- LED overhead and concealed lighting (24v)
- Bathroom accessories
- Solid surface flooring, with synthetic teak accents (weathered finish) applied to feature shower bulkheads and shower floor

Forward stateroom

- Large double bed with bedside tables and drawers below
- Built-in safe
- Twin double wardrobes
- Port side dressing table with integrated mirror, stool and storage drawers
- 43" 4K UHD LED TV
- Naim Uniti Atom audio system with Focal 100 ICW6 speakers (2)
- Panoramic windows including opening portholes
- Roman blinds to hull windows

- Dimmable LED overhead/concealed lighting (24v) with scene selection
- 220/240v outlets (2)
- USB charging points (4)
- Fitted carpet

En-suite bathroom

- Washbasin and vanity top in thermoformed solid surface
- Mirror
- Storage lockers
- Electric freshwater toilet
- Shower compartment with automatic pump out
- Extractor fan
- Window with opening porthole
- Manual tension venetian blind
- LED overhead and concealed lighting (24v)
- Bathroom accessories
- Solid surface flooring, with synthetic teak accents (weathered finish) applied to feature shower bulkheads and shower floor

Starboard guest cabin

- Double bed with drawers below

- Bedside table
- Dressing table with stool
- Wardrobe with shelves
- Mirror
- Storage lockers
- Window with opening portholes
- Roman blind
- Dimmable LED overhead/concealed lighting (24v) with scene selection
- Individual berth lights
- 220/240v outlets (1)
- USB charging point (2)
- Fitted carpet

En-suite bathroom

- Electric freshwater toilet
- Washbasin and vanity top in thermoformed solid surface
- Mirror
- Storage lockers
- Shower compartment with automatic pump out
- Extractor fan
- Window with opening porthole
- Manual tension venetian blind
- LED overhead and concealed lighting (24v)

- Bathroom accessories
- Solid surface flooring, with synthetic teak accents (weathered finish) applied to feature shower bulkheads and shower floor

Port guest cabin

- Two single beds with drawers below
- Bedside table
- Wardrobe with shelves
- Mirror
- Storage lockers
- Window with opening portholes
- Roman blind
- Dimmable LED overhead/concealed lighting (24v) with scene selection
- Individual berth lights
- 220/240v outlets (1)
- USB charging point (2)
- Fitted carpet

En-suite bathroom

- Electric freshwater toilet
- Washbasin and vanity top in thermoformed solid surface

- Mirror
- Storage lockers
- Shower compartment with automatic pump out
- Extractor fan
- Windows with opening portholes
- Manual tension venetian blind
- LED overhead and concealed lighting (24v)
- Bathroom accessories
- Solid surface flooring, with synthetic teak accents (weathered finish) applied to feature shower bulkheads and shower floor

Lower accommodation lobby

- Linen cupboard below companionway stairs
- Top-loading storage unit outboard in window side liner
- Sideboard with mirror above
- Space for optional combination washer/dryer below companionway stairs
- LED overhead/concealed lighting (24v) with scene selection
- Fitted carpet
- Manual roller blind to window

Crew quarters

- All lower crew furniture is in white laminate, with Koko White solid surface (satin finish) bathroom vanity unit tops and Koko White solid surface (satin finish) bathroom floors

Crew cabin

- Twin single beds with storage below
- Wardrobe with shelf
- Mirror
- Storage lockers
- Opening porthole (2, port and aft) and venetian blinds
- LED overhead lighting (24v)
- Individual berth light
- 220/240v outlets (1)
- USB charging points (2)
- Non-slip safety flooring

Starboard crew cabin

- Single bed with storage below
- Wardrobe
- Mirror
- Storage locker
- Opening porthole and venetian blind

- LED overhead lighting (24v)
- Individual berth light
- 220/240v outlets (1)
- USB charging points (2)
- Non-slip safety flooring

Crew bathroom

- Electric freshwater toilet
- Washbasin with Koko white (satin finish) solid surface vanity top
- Mirror
- Storage lockers
- Shower compartment with automatic pump out
- Extractor fan
- LED overhead lighting (24v)
- Bathroom accessories
- Solid surface flooring in Koko white (satin finish)

Crew area

- Access from transom door
- Access to engine room
- Washing machine and separate tumble dryer (stacked)
- LED overhead lighting (24v)

- Non-slip safety flooring

Power and drive systems

- High volume air intakes
- Engine room extractor fan with electronic time delay
- Engine exhaust silencers and water-cooled exhausts
- Forward and aft engine room bulkheads and engine room deck head to be integrally bonded including insulation with acoustafoam layers
- Engines flexibly mounted
- Automatic fire extinguisher with remote override control
- Automatic and manual bilge pumps
- Propeller shafts in Marinemet
- 5-bladed propellers in nickel aluminium bronze
- High speed balanced rudders
- Cathodic protection for stern gear
- Stern gear, engines, fuel tank fillers, all electrically bonded
- LED engine room lighting
- Engine room access from transom (via crew) and cockpit deck hatch
- Power-assisted electro-hydraulic steering system

- Electronic engine and gear shift controls
- Bow thruster with dual-station controls (340kgF)
- Fresh water supply point in engine room
- Dripless self-aligning shaft seals

Electrical systems

24 Volt:

- 4 x heavy duty batteries for engine starting
- 6 x heavy duty auxiliary batteries
- Battery link facility with remote control at helm position
- Both battery banks are charged using a voltage sensitive relay that parallels both battery banks when a charging source is present
- 1 x 100 amp charger, 1x 100 amp -3500W charger/inverter and 1x 6 amp charger (for generator battery)
- Remote battery isolator control switches at main switch panel position
- Circuit breakers on all circuits
- 24v to 12v converters for certain navigation and radio circuits
- 24v to 240v/50Hz inverter for saloon A/V, galley fridge and optional telephone system

- Galvanic isolation system
- Princess Connect telemetry and maintenance system

220/240 Volt:

- European specification: Up to 2 x 28kW @ 50Hz diesel generators in own sound shields, water cooled and with specially silenced exhaust systems and with remote operation from main control panel (single generator as standard)
- USA specification: Up to 2 x 32kW @ 60Hz diesel generators in own sound shields, water cooled and with specially silenced exhaust systems and with remote operation from main control panel (single generator as standard)
- 220/240v shore power inlet (2 x 63 amp single phase)
- Shore power/generator change over control operated from main control panel
- Polarity check system
- Earth leakage safety trip, circuit breakers on all circuits
- Power points (240v) in all cabins and living areas, helm position and galley
- 240v shaver points in washrooms

- 3kW 2kW immersion heater for fresh water (2)

Fuel system

- Main fuel tank with a total 7,000l litres of fuel capacity (8,800l if long range fuel tank is specified).
- Fuel fillers to port and starboard
- High capacity duplex fuel filters/water traps with integral changeover valves and water sensors connected to alarms at helm position
- Remote fuel isolation controls in cockpit locker for main engines and generators
- Fuel gauges at helm position

Air conditioning system

- Air conditioning/heating reverse cycle 270,000 BTU fan capacity with 216,000 BTU chiller capacity suitable for temperatures to 40°C (tropical)
- Windscreen demist facility
- Outlets in all areas

Water systems

- Fresh water tanks giving 1,500l capacity plus 205l hot water calorifier
- Automatic water pump with filter (80l/min)
- Water level gauge
- Deck filler
- Pump control at main helm station
- Electric freshwater toilet system linked to 540l holding tank, content gauge and low noise electric overboard discharge, with macerator backup system as well as dockside discharge system

Bilge pumps

- Automatic/manual override electric bilge pumps in engine room, rudder area and forward accommodation
- High capacity manual bilge system with suction points in the same areas
- Electric bilge pumps have controls and warning lights with audible alarm at helm position

Fire extinguishers

- Automatic engine room fire extinguisher system (with manual override) and warning system at

- helm position providing automatic shutdown of engines, generators and ventilation fans
- Hand operated fire extinguishers in all guest cabins, galley, crew quarters and flybridge

Other standard equipment

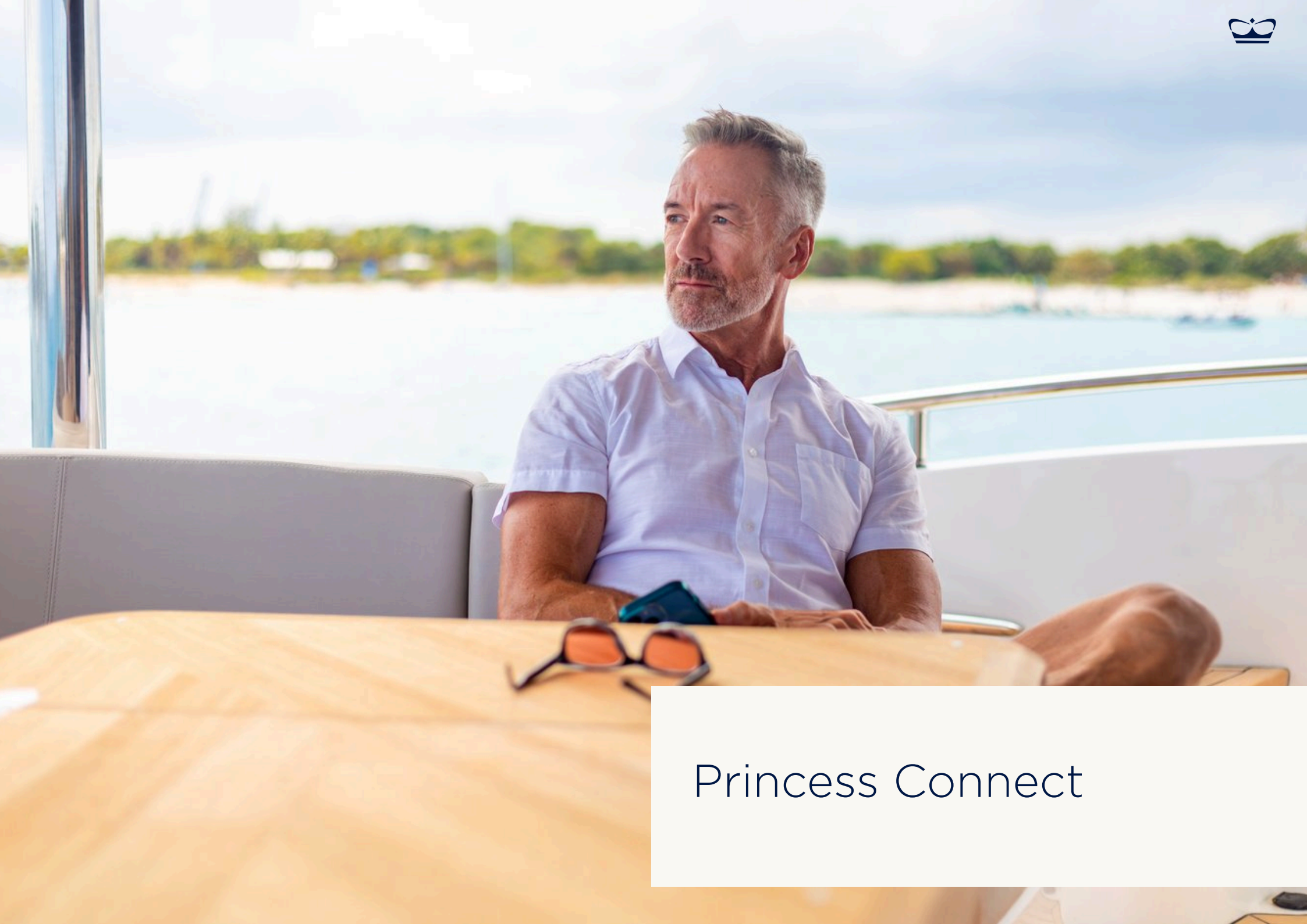
- Ensign staff
- Fenders (8)
- Mooring warps (4)
- First aid kit
- Set of towels (8 large, 8 hand) (10 for optional 5 cabin layout)
- Bed cover supplied to all cabins (except crew cabin)
- Complete set of Lucrezia crystal glassware (8 settings consisting of tumbler, highball and wine glasses) (10 settings for optional 5 cabin layout)
- Set of Sous Le Soleil crockery (8 settings consisting of plate, cake plate, dessert plate, bowl, cup and saucer) (10 settings with for optional 5 cabin layout)
- Set of stainless steel cutlery (8 settings of David Mellor "Paris" cutlery 7 pieces) (10 settings for optional 5 cabin layout)
- Tool kit

- Boat hook
- Owner's manual and engine manual
- Ship's document case

Finishes

- Teak-laid decks to all external deck areas (including flybridge)
- Timber flooring (V grooved planked) to galley, skylounge and wheelhouse
- Furniture in Rovere oak satin finish as standard (Silver oak satin finish, Ash satin finish or Walnut in satin or gloss finish are available as an option)
- Solid surface floors in all bathroom suites in guest accommodation (including day head)
- Thermoformed solid surface wash basin counter tops in all bathroom suites and day head
- Synthetic teak accents (weathered finish) applied to bulkheads/shower linings in all guest ensuites
- Galley counter top in granite or quartz
- Choice of high-quality carpets and fabrics from extensive range
- Curtains, blinds or sunscreens to all windows and portholes (excludes helm and pantograph doors)
- Crew cabins have fitted carpet, Crew bathrooms

- have solid surface floors and countertops
- Non-slip safety flooring to crew mess and passageway



Princess Connect

For your peace of mind, we provide a telemetry and transparent maintenance system as standard on all our new yachts.

Princess Connect is designed to keep you and your yacht in continuous communication, providing remote monitoring anywhere in the world.

In addition to enhanced control onboard, Princess Connect acts as your virtual service operator, providing personalised notifications on upcoming maintenance requirements, a digital library of user guides and manuals, and further support information.





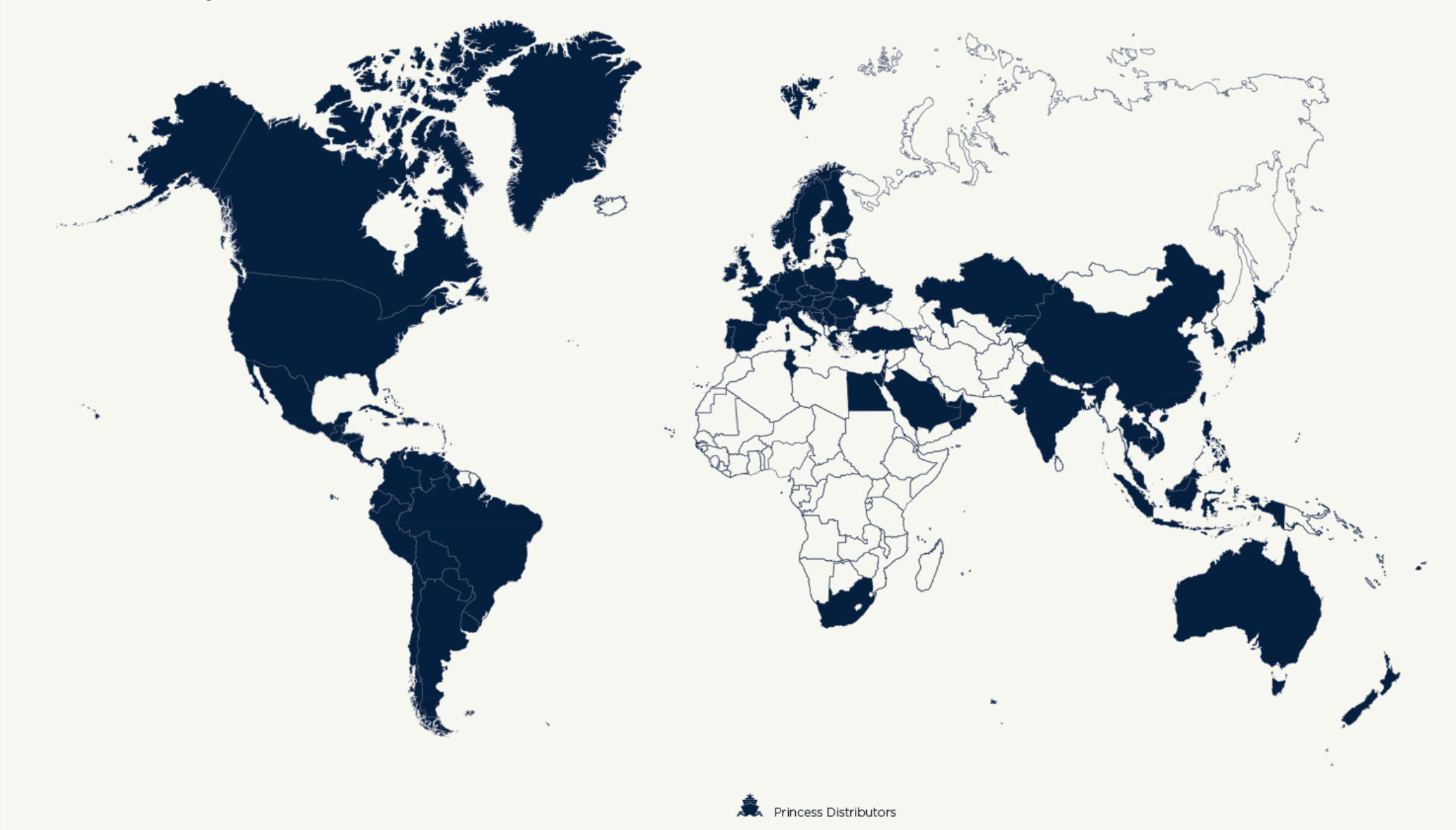
Distributor Information



With an extensive network of distributors around the globe, we are able to bring you personalised world-class service almost anywhere. We do all that we can to make sure that the process of buying a Princess is yet another exciting aspect of ownership.

Our specialist dealers have years of experience and unparalleled knowledge of our yachts. For more information on any one of the yachts in our range, please contact your local Princess office. Address and contact details can be found on our [website](#).

Global Coverage





Disclaimer

* Displacements are calculated with 50% fuel and water with liferaft but with no optional equipment fitted or other gear.

† Maximum speeds will vary depending on cleanliness of hull, condition of sterngear, loading of craft, water and air temperatures, sea conditions and other factors. Speed estimates are therefore given in good faith but without warranty or liability on the part of Princess Yachts Limited. Craft illustrated in this brochure may be fitted with certain optional equipment. Specifications may be changed at any time without notice or liability.

‡ Certain specifications, which vary by model, are upgraded on Princess Yachts built for use in North America. Thus, specifications and equipment will vary from the information listed in the brochure for North American Princess Yachts (e.g. air conditioning and an upgraded generator will be included as standard for all North American models and electric cooking facilities will be supplied in place of gas systems). Please contact Princess Yachts America for full details regarding the North American specifications for individual models.



Thank you

For more information or to find a distributor,
please visit our website.