



DRIVE THE SEA.

Strider

19

*Each model comes from a thought, from a pencil that flows on a sheet and comes to life thanks to the passion for unique and brilliant design that has always distinguished us.*





**SACS**

# *Design and architectural elements with a sharp attitude: this is the Sacs mix.*

Under the aspiration of a visionary strategy, Sacs has traced the new trends in the sector by inaugurating the era of the maxiribs, which combine the comfort and safety of ribs, with the luxury and design of the yacht.

Sacs Owner is a daring enthusiast with a dynamic, smart, contemporary lifestyle. He wants to own something special and unique that can be separated from the rest, from the masses, from the crowd. He is always looking for his own personal way of living the sea, dominating the waves and feel the taste of freedom.

**Sacs, Drive the SEA.**

**Made in Italy**  
**since 1989**



Sacs excellence shapes your thoughts.  
Each Sacs is a unique masterpiece, created following the wishes and needs of the Customers.

The most advanced technologies in the sector combined with the italian craftsmanship strengthened by passion and thirty years of experience, make the most of each boat, ensuring excellent performance, in total safety.

# Models



## Rebel



A new nautical concept to experience the sea: Rebel has re-written the rules. BORN TO REBEL.

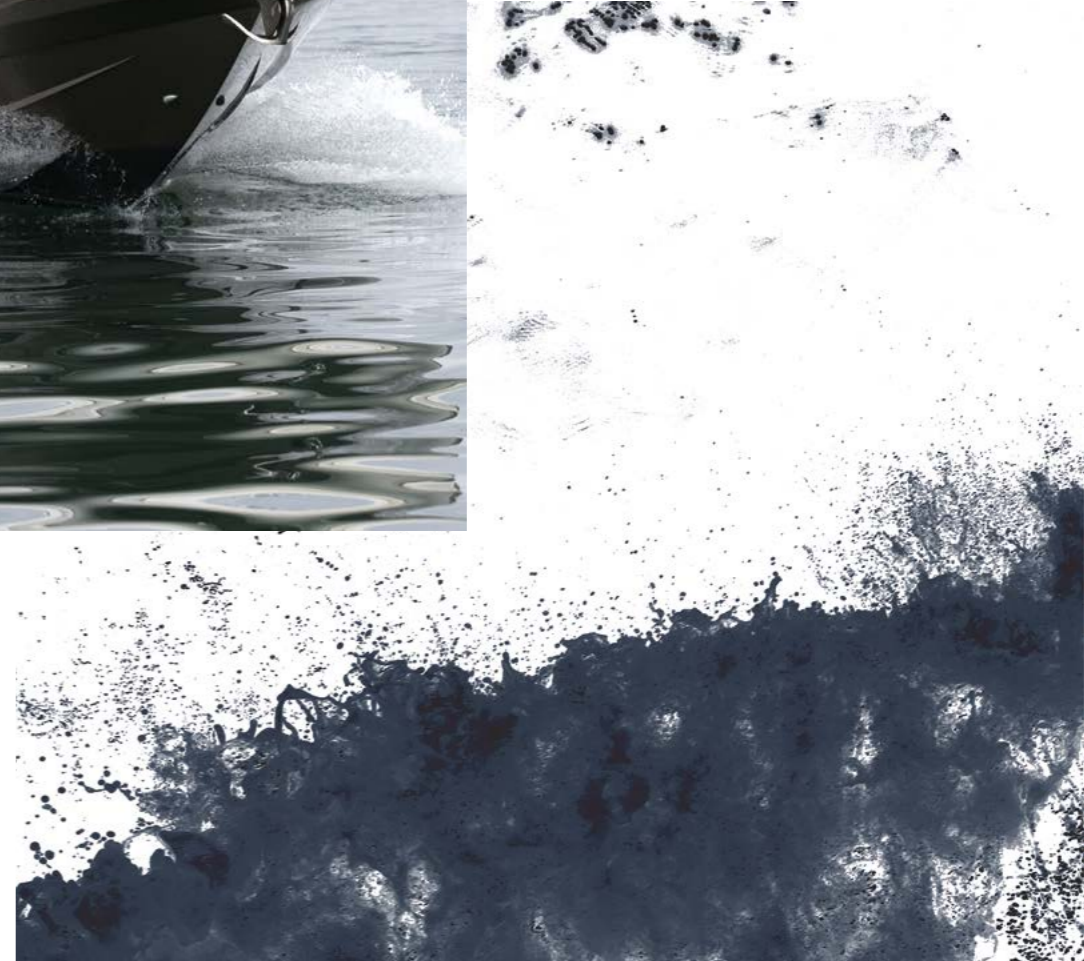
## Strider



Performance, design and comfort, combined with a surprising personality. However you want to experience the sea, there is the perfect rib for you. NO LIMITS TO YOUR DREAM.

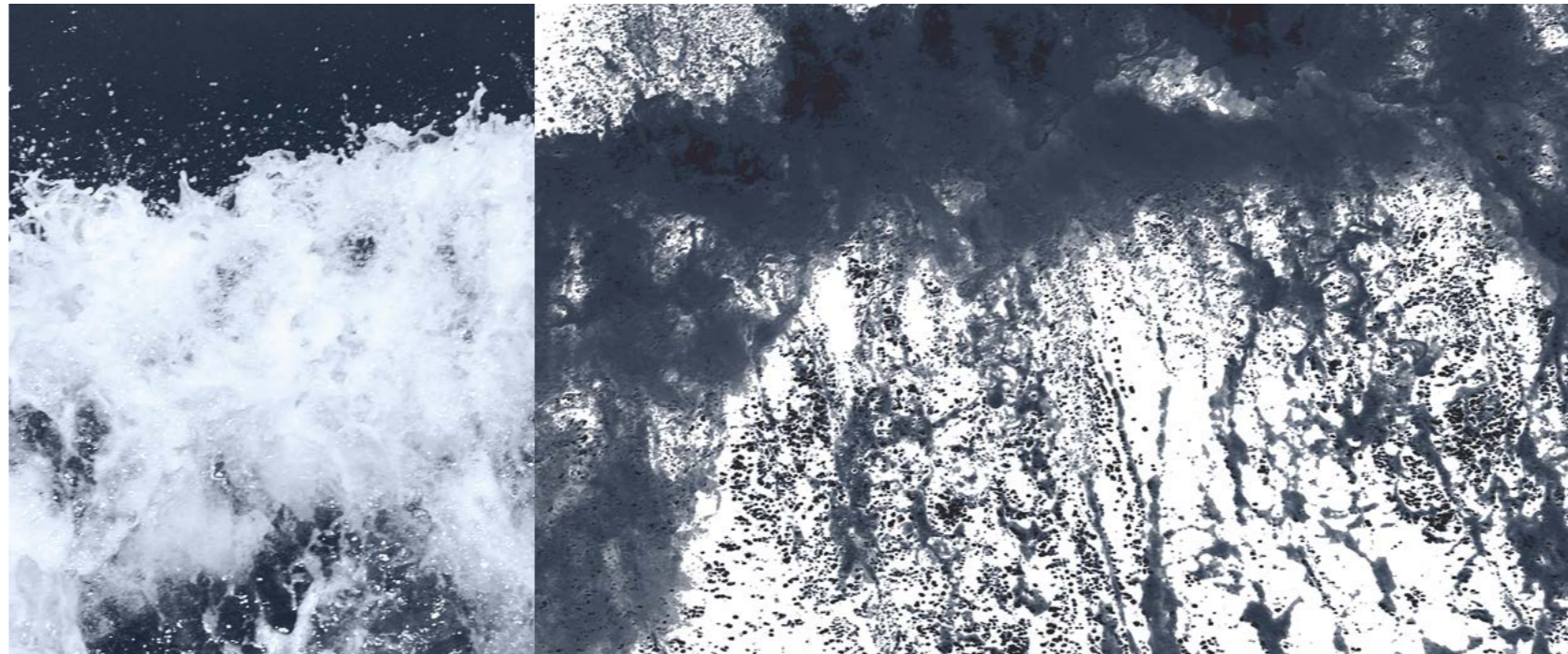
# Strider 19





# **Strider 19**

Wildly spacious,  
captivating, timeless



The owner can in fact select the layout and chose the décor as much as he likes adapting the boat to whatever use like a maxitender, a party boat or a luxury cruiser. His technical features allows unbeatable performances in all sea conditions.

**1913 kw**  
Maximum installable  
power

**50 kn**  
Maximum Speed

**22**  
Persons capacity

\*The data refer to the boats put to the test, with test load, under ideal weather conditions that are not assured





Stern guest stateroom with comfortable double bed



Comfortable and stylish bow master stateroom with super queen size bed



## All in *details*

Each Sacs boat reflects the style of its Owner, even in the smallest details. A professional team accompanies the Owner in the configuration process and choice of the wide range of fine essences, refined textures and design accessories



Bathroom area with separate rain shower and toilet



Fully equipped kitchen area

Deckview: four forward-facing captain's seats and two opposite single seats with storage



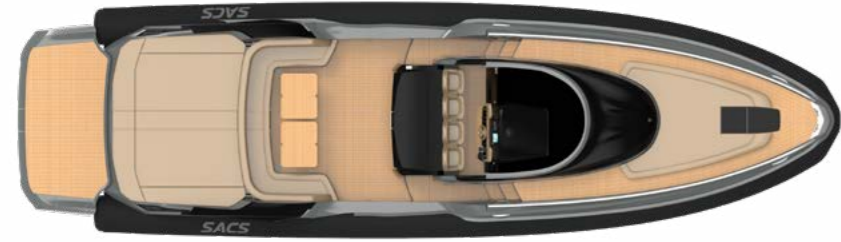
Cockpit comfortable chill space



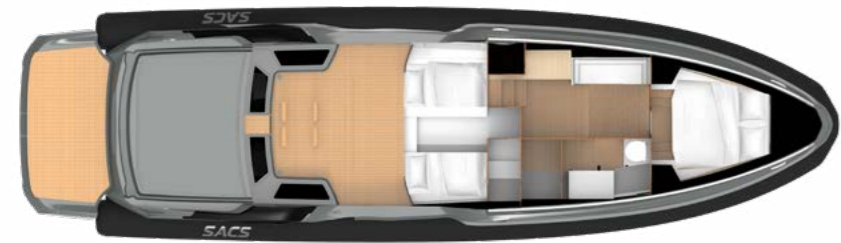
Side



Main deck



Lower deck



Side

WALKAROUND



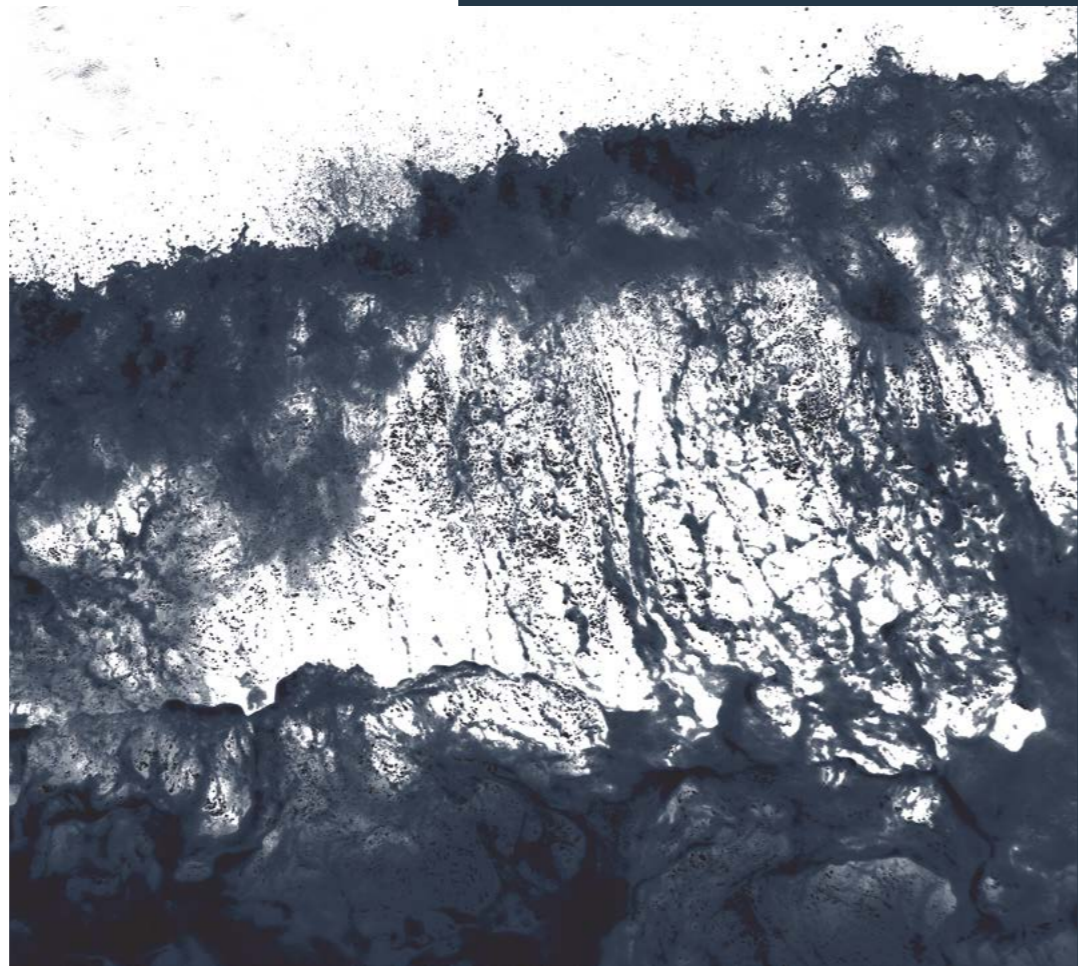
Main deck

WALKAROUND



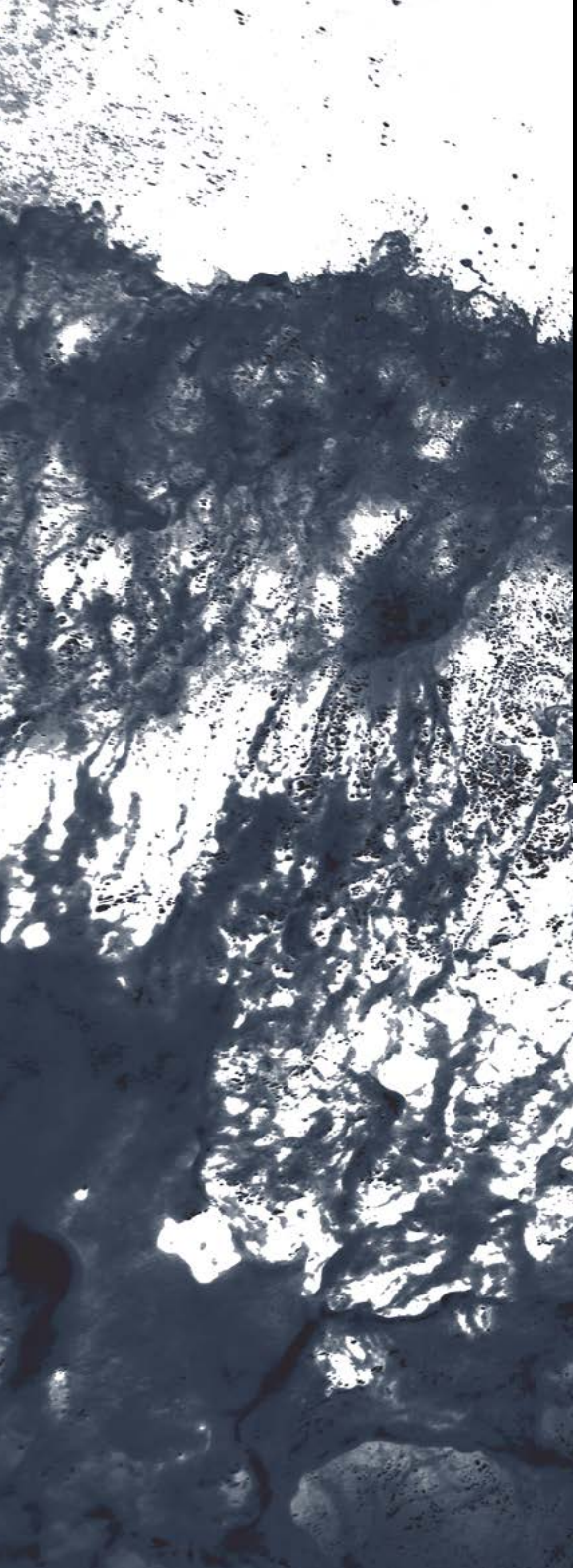
# Technical specifications: Strider 19

	INBOARD
Overall length	18,13 m
EC certifying length	16,62 m
Max beam	5,36 m
Draft (to the prop)	1,10 m (1,10 m)
Tubes	80 cm
Number of tubes compartment	9
Hull type	Deep V Hull
Dead rise	22,3°
Dry weight with standard engines	21,0 t
Fuel tank capacity	2 x 1500 L
Water tank capacity	300 L
Waste tank capacity	280 L
Homologation category	CE - B
Persons capacity	22
Sleeping accommodation	4 + 1 Opt
<b>Maximum installable power</b>	<b>1913 kW</b>
<b>Suggested engine</b>	<b>2 x MAN V8 1300 hp</b>
<b>Transmission</b>	<b>Surface Drives</b>
<b>Max speed</b>	<b>50 kn</b>
<b>Cruise speed</b>	<b>32 - 36 kn</b>
<b>Consumption (speed)</b>	<b>230 L/h (32 kn)</b>
<b>Range at cruising speed</b>	<b>415 NM</b>
Design	Christian Grande DesignWorks
Project	SACS



The Characteristics of the boats are provided as example only. Furthermore, under any circumstances the above mentioned descriptions shall not represent an element to be used as assessment of conformity of the boats, including matters pursuant to the European directive EC 00/44.


As part of the strategy of constantly updating the technical and styling features of the boat, SACS reserves the right to amend the features of its boat at any time. The Customer must therefore carefully verify the features of the boat with SACS sales force before placing his order.



Via Don Locatelli, 49  
20877 Roncello (MB)  
Italia

Tel: +39 039 6885489  
Email: [info@sacsmarine.it](mailto:info@sacsmarine.it)  
[www.sacsmarine.com](http://www.sacsmarine.com)

 @SACS Sacsmarine

 @OfficialSacsMarine

 @sacsmarine\_official