



DRIVE THE SEA.

Strider

13

*Each model comes from a thought, from a pencil that flows on a sheet and comes to life thanks to the passion for unique and brilliant design that has always distinguished us.*



**SACS**

# *Design and architectural elements with a sharp attitude: this is the Sacs mix.*

Under the aspiration of a visionary strategy, Sacs has traced the new trends in the sector by inaugurating the era of the maxiribs, which combine the comfort and safety of ribs, with the luxury and design of the yacht.

Sacs Owner is a daring enthusiast with a dynamic, smart, contemporary lifestyle.

He wants to own something special and unique that can be separated from the rest, from the masses, from the crowd. He is always looking for his own personal way of living the sea, dominating the waves and feel the taste of freedom.

Sacs, Drive the SEA.



**Made in Italy**  
**since 1989**



Sacs excellence shapes your thoughts.  
Each Sacs is a unique masterpiece, created following the wishes and needs of the Customers.

The most advanced technologies in the sector combined with the italian craftsmanship strengthened by passion and thirty years of experience, make the most of each boat, ensuring excellent performance, in total safety.



# Models



## Rebel



A new nautical concept to experience the sea: Rebel has re-written the rules. BORN TO REBEL.

## Strider



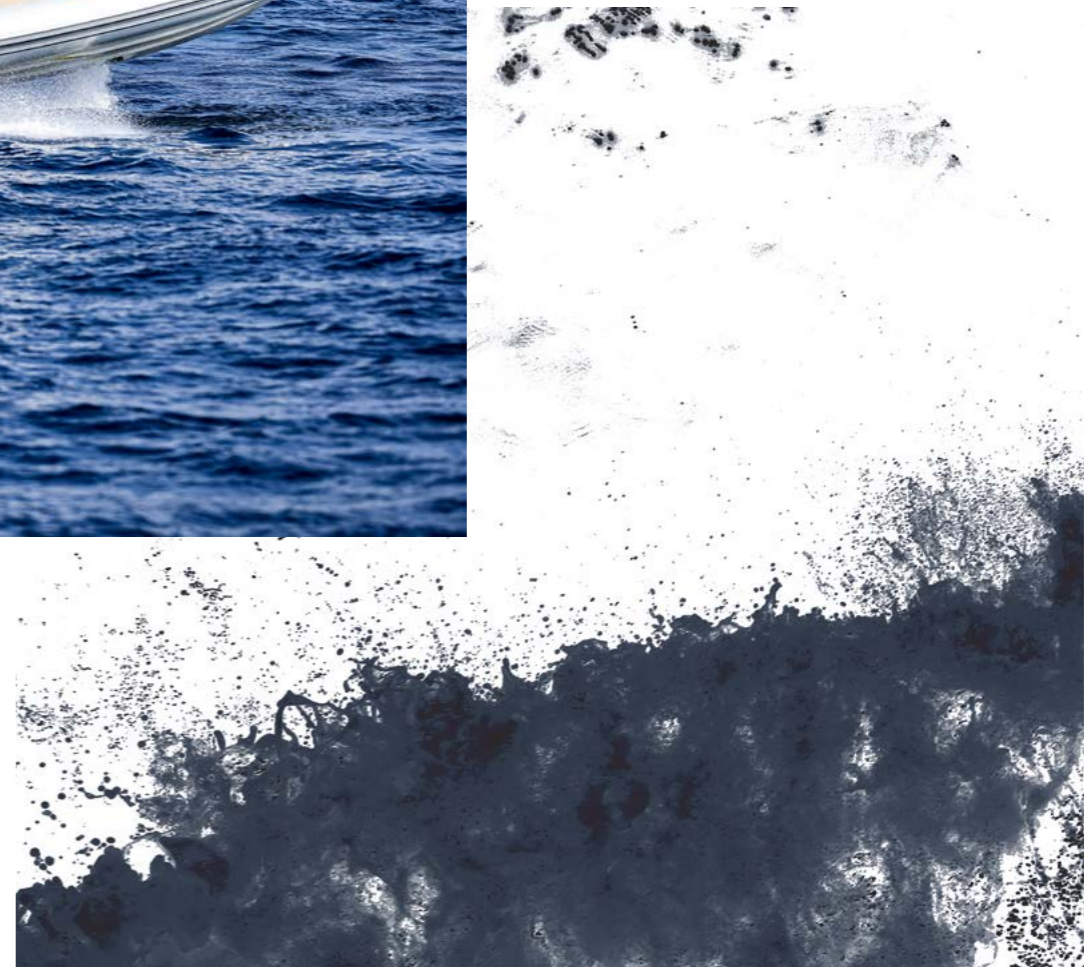
Performance, design and comfort, combined with a surprising personality. However you want to experience the sea, there is the perfect rib for you. NO LIMITS TO YOUR DREAM.



# Strider 13



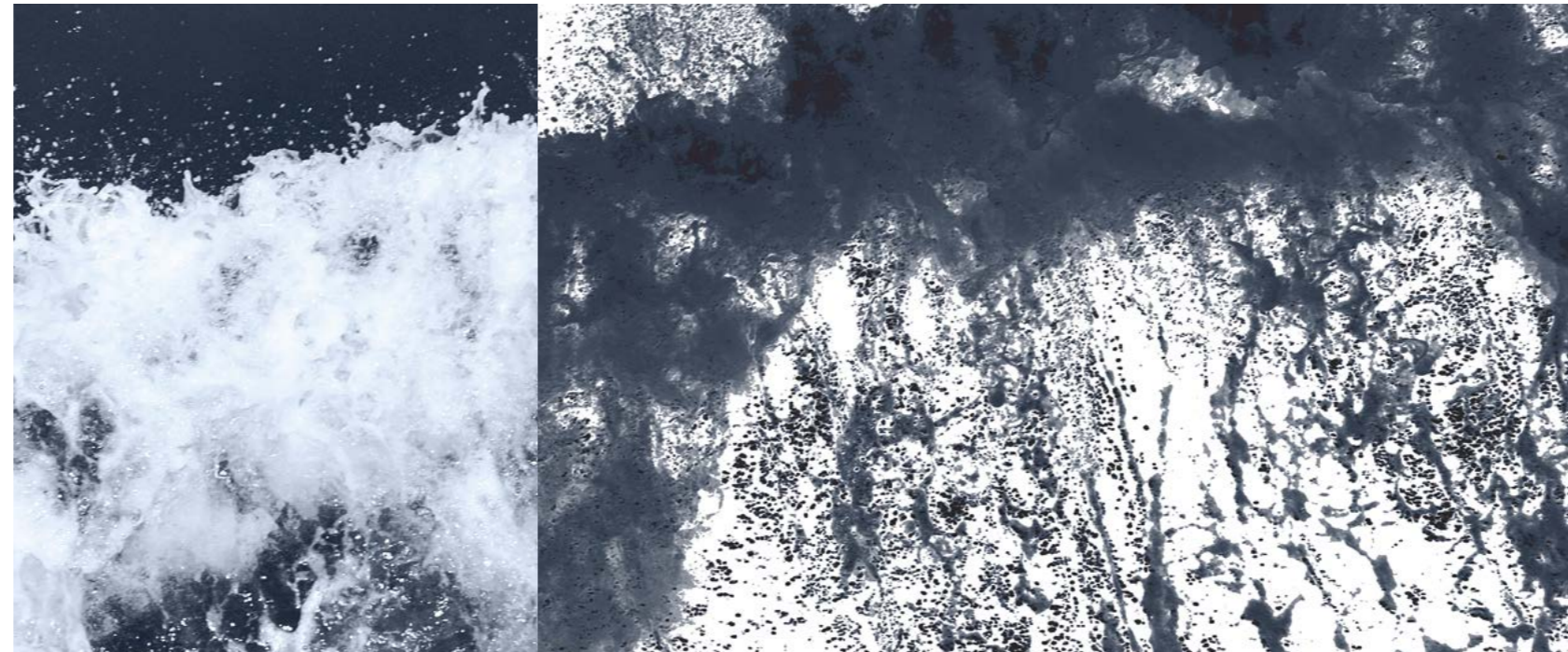






# **Strider 13**

Unique, irresistible,  
adventurer



Its unique console attracts glances with its imposing looks. It is ideal for a sporting owner seeking a high performance and spacious boat, but it is also perfect as a “chase boat” or a tender for a maxi yacht.

**633kw**  
Maximum installable  
power

**45kn**  
Maximum Speed

**16**  
Persons capacity

\*The values refer to the tests performed in optimal weather conditions with the boats equipped with the inboard suggested engine.







Comfortable and stylish bow master stateroom with double bed



Bathroom area with rain shower and toilet



## All in *details*

Each Sacs boat reflects the style of its Owner, even in the smallest details. A professional team accompanies the Owner in the configuration process and choice of the wide range of fine essences, refined textures and design accessories.





Deck view with enjoyable living area, adjustable table, food&beverage storages



Large sundeck and living area



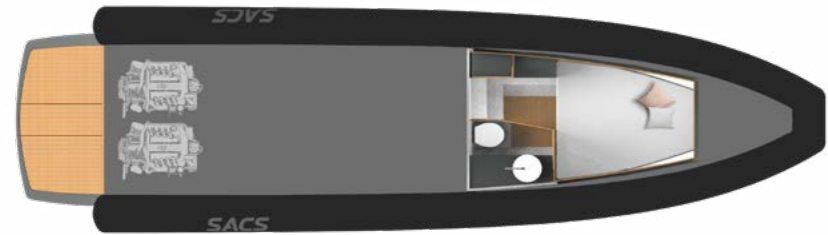
Dynamic and ergonomic driving console





Side  
INBOARDMain deck  
INBOARD

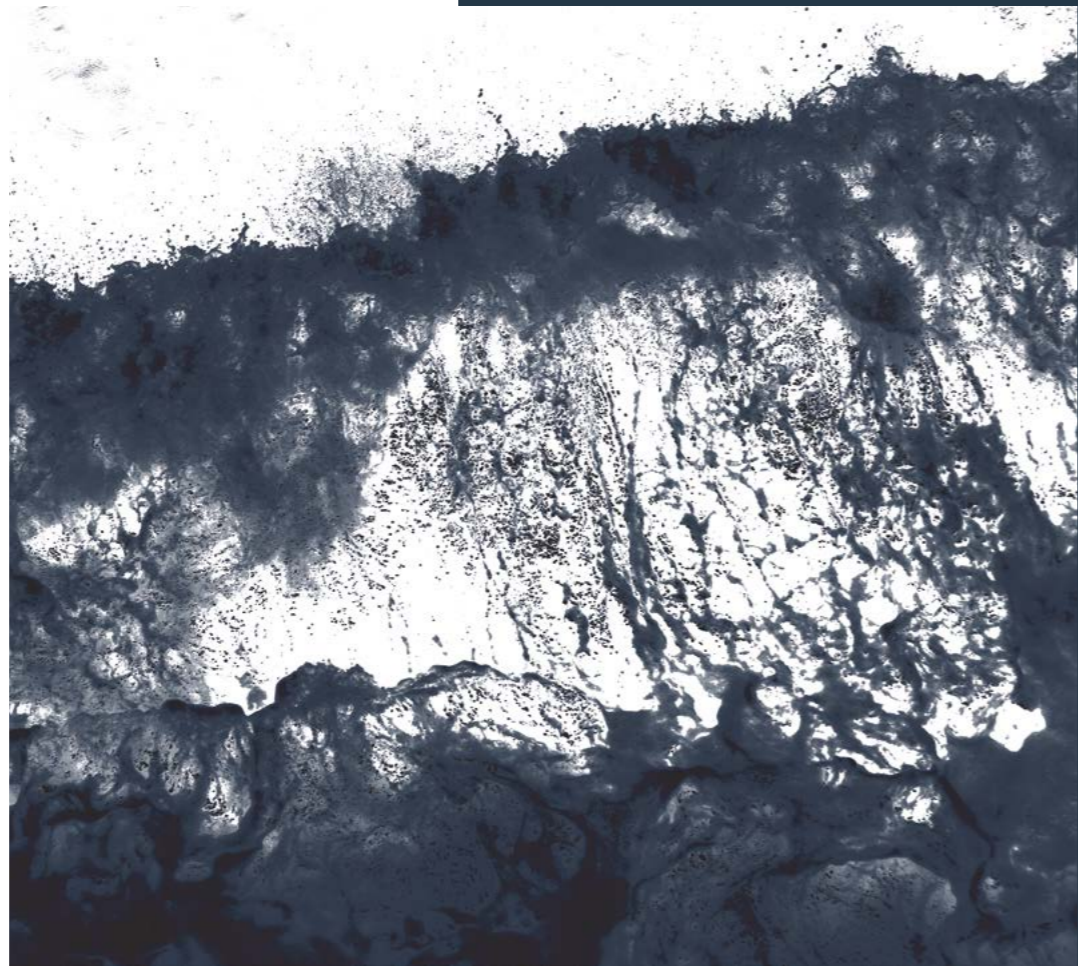
Lower deck

Side  
OUTBOARDMain deck  
OUTBOARD

# Technical specifications: Strider 13

	INBOARD	OUTBOARD
Overall length	13,38 m	13,43 m
EC certifying length		11,98 m
Max beam		3,98 m
Draft (to the prop)		0,70 m (1,00 m)
Tubes		70 cm
Number of tubes compartment		8
Hull type		Deep V Hull
Dead rise		23,2°
Dry weight with standard engines	6,6 t	5,9 t
Fuel tank capacity		1000 L
Water tank capacity		170 L
Waste tank capacity		40 L
Homologation category		CE - B
Persons capacity		16
Sleeping accommodation	2	2 + 2 Opt
<b>Maximum installable power</b>	<b>633 kW</b>	<b>662 kW</b>
<b>Suggested engine</b>	<b>2 x Volvo D6 400 hp DPI</b>	<b>2 x Mercury 450 hp</b>
<b>Transmission</b>	<b>Stern Drive</b>	<b>Outboard</b>
<b>Max speed</b>	<b>45 kn</b>	<b>52 kn</b>
<b>Cruise speed</b>	<b>28 - 32 kn</b>	<b>30 - 34 kn</b>
<b>Consumption (speed)</b>	<b>68 L/H (28 kn)</b>	<b>100 L/H (30 kn)</b>
<b>Range at cruising speed</b>	<b>415 NM</b>	<b>300 NM</b>
Design	Christian Grande DesignWorks	
Project	SACS	

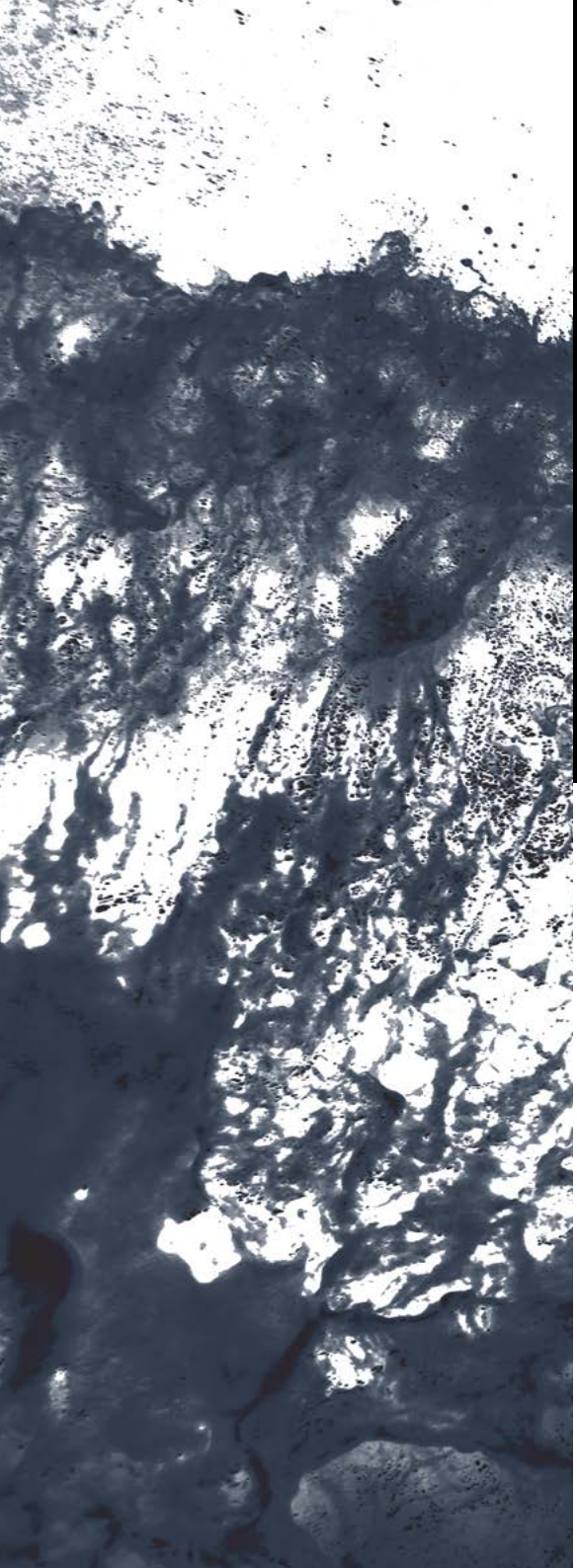




The Characteristics of the boats are provided as example only. Furthermore, under any circumstances the above mentioned descriptions shall not represent an element to be used as assessment of conformity of the boats, including matters pursuant to the European directive EC 00/44.

As part of the strategy of constantly updating the technical and styling features of the boat, SACS reserves the right to amend the features of its boat at any time. The Customer must therefore carefully verify the features of the boat with SACS sales force before placing his order.





Via Don Locatelli, 49  
20877 Roncello (MB)  
Italia

Tel: +39 039 6885489  
Email: [info@sacsmarine.it](mailto:info@sacsmarine.it)  
[www.sacsmarine.com](http://www.sacsmarine.com)

 @SACS Sacsmarine

 @OfficialSacsMarine

 @sacsmarine\_official